



OIKOS
TREE CROPS
CATALOG 2013

WELCOME

Hello, and Welcome to Our 2013 Catalog

Enclosed is our most diverse selection yet of plants and seeds—meant for the ‘average’ gardener looking for nutritious and delicious edible plants that can produce in a variety of climates, without a lot of care. Healthy plants create healthy humans. In essence, it seems plants are breeding humans—and not the other way around.

Thank you for the opportunity to help with your discovery of the natural world—may each plant create a connection that is long-lasting and fulfilling. — Ken Asmus



Photos: Michael McPeck/mcpeckmedia.com

LOOK FOR THE LEAF:

The Ecos leaf represents strains and selections of plants that we have developed at our farm. Increased fruiting, disease and insect resistance, hardiness or any characteristic that makes cultivation more successful is an Ecos selection.



Ecos: Discovery and the Seedling Planting

Our unique seed plantings allow us to maintain and improve the Ecos strain over time through open pollination removing weak plants keeping the most productive plants while maintaining genetic diversity. Everything is grown from seeds all produced at our farm.

Tree and Shrub Seeds Available:

Packets of seeds are available for one month in the fall of the year starting in October. We do not offer bulk quantities. Only a select few are offered, depending on yield, so it is not necessary to email us your want list. Our new website will have these seeds listed as they become available.

A common experience at Oikos: hours spent under trees and shrubs harvesting fruits and nuts, often one by one. Plenty of time to contemplate the universe—and why ground bees seem to hold a grudge...



Gathering Pears for Seed

Front Cover Photo: Our Pecan Forest

INDEX:

| | |
|------------------------------|----|
| Apples, Wild | 7 |
| Apricots | 6 |
| Asparagus | 56 |
| Autumnberries | 23 |
| Cactus / Nopales | 57 |
| Cherries | 8 |
| Chestnuts | 48 |
| Currant / Gooseberry | 16 |
| Edible Flowers | 55 |
| Flavorings / Herbs | 74 |
| Grasses / Alternative Lawn | 52 |
| Greens, Perennial | 68 |
| Groundcherry / Tomatillo | 58 |
| Hazelnuts | 27 |
| Hickories / Pecans | 39 |
| Info / Policies / Order Form | 42 |
| Juneberry / Serviceberry | 19 |
| Mulberries | 30 |
| Nitrogen-Fixers (Shrub) | 22 |
| Oaks | 34 |
| Pawpaws | 28 |
| Pears, Wild | 10 |
| Persimmons, American | 29 |
| Plums, Wild | 3 |
| Potatoes | 66 |
| Quinces | 11 |
| Raspberries | 17 |
| Roses, Wild | 18 |
| Seeds | 78 |
| Shrub Crops | 22 |
| Strawberries | 12 |
| Sunchokes | 60 |
| Tree Crops - Locust / Willow | 31 |
| Tubers / Root Crops | 59 |
| Viburnums | 24 |
| Walnuts | 38 |

WILD PLUMS

Bounty Canada Plum *Prunus nigra*

Tart, Red, Prolific—Most Northern Plum in America—Known for Its Productivity

Bounty produces large fruits up to 1.5" in size, on relatively young trees in 4-6 years from seed. Can grow in the most inhospitable sites and still fruit where temperatures go below -40 F. Similar to the American plum but does not sucker. Need two for pollination. Height to 15 ft.

BCPL Pot, 1-2' **\$9.75 each**



Bounty Canada Plum

Dunbars Plum *Prunus x dunbari Ecos*

High-Quality Wild Plum—Delicious Fresh or for Jam—Heavy Producer—Vigorous

Produces a great variety of flavors, from tart to sweet, with multiple fruit colors. Our Ecos strain was selected only from trees with high-quality fruit, good yields and no insect damage. Need 2 for pollination. Height 15 ft. -30 F.

DUPL Pot, 6-12" **\$6.75** 1-2' **\$8.75**

FG, 4-8" in Bundles of 25 **\$43.75** (\$1.75 each)



Dunbars Plum

Wild Goose Plum *Prunus munsoniana 'Wild Goose' Ecos*

Sweet, Juicy Plum for Fresh Eating

The story about this tree comes from a hunter who found the seed in the stomach of a goose and planted it. Many seedlings were distributed under its name. Widely grown in the Midwest as it was well adapted to the soils and climate, compared to the European types. Very vigorous seedlings. Need two for pollination. Height 15 ft. Hardy to -25 F.

WGPL Pot, 6-12" **\$7.75** 1-2' **\$9.75**



Dunbars Plum in Spring



Wild Goose Plum

NOTE: FG = field-grown bare root plants
Pot = grown in paper pots

WILD PLUMS



Dunbars Plum Fruit

Beach Plum *Prunus maritima*
 Indigenous East Coast Species—
 Highly Productive Even Without a Beach
 Fruit used for wine, beer, jam and jelly as well as
 fresh eating. High in vitamin A and cholesterol-
 lowering pectin. The last *Prunus* species to flower,
 missing frosts. Always a crop. Can grow in pure
 sand or your average loam soil. Plant two for pol-
 lination. Height 10 ft. Hardy to -35 F.

BEPL FG, 6-12" \$4.75 12-18" \$6.75
 18-24" \$8.75
 25+ 12-18" \$2.25 each



Beach Plum

Sloe Plum *Prunus spinosa* *Ecos*
 The Blackthorn Tree

Dwarf-growing shrub found throughout Europe.
 Widely used at one time for plum jellies, syrups,
 preserves; olives, flavoring for gin and herbal
 teas. Our *Ecos* strain is from the variety 'Plena'
 noted for its prolific flowering and fruit. Best in
 full sun and dry soils. Height 6 ft. Hardy to -35 F.

SLPL FG, 4-8" \$5.75 each
 Bundle of 25, FG, 3-6" \$43.75 (\$1.75 ea.)



Sloe Plum



Ecos Beach Plum



Beach Plum



Ecos Beach Plum

Ecos Beach Plum *Prunus maritima* *Ecos*
 Best-Quality Fruiting—Highly
 Productive Selection
 Selected from individuals with sweet yellow or
 large, clean fruit without spray. This is our best
 seedling strain for fruit production. We only use
 selected 3rd generation seed to produce this strain
 from our plantings. Height 10 ft. Hardy to -35 F.
BEPL-E Pots, 6-12" \$5.75 1-2' \$7.75
 25+ 6-12" \$3.25 each
 FG, 4-12", Bundle of 25 plants \$43.75 (\$1.75 ea.)



Ecos Beach Plum

Mexican Plum *Prunus mexicana*
 Big-Tree Plum From the Southwestern
 US—Extreme Drought Tolerance
 One of the best selections for its ability to grow
 in high heat and still crank out the plums.
 Fruits are very sour and astringent. This did not stop
 early Americans from using them for brewing
 and jelly. Our selections originally came from
 Texas. 1/2" fruit size. Need two for pollination.
 Height 20 ft. Hardy to -25 F.

MEPL Pot, 8-18" \$9.75



Nana Beach Plum Flowers

Nana Beach Plum *Prunus maritima* *Ecos*
 A Natural Dwarf—An Extremely
 Productive Spur-Type Plum
 Selected from five plants that fruited in one year
 from seed. We started growing 2nd and 3rd
 generations producing many 'nanites'. These now
 provide us with the benefits of large yields on
 small plants. After 20 years plant height averages
 5 ft tall. Plant two for pollination. Height 5 ft.
 Hardy to -30 F.

NBPL Pot, 6-12" \$5.75
 FG, 4-8", bundle of 25 \$43.75 (\$1.75 ea.)



Nana Beach Plum

APRICOTS

Siberian Apricot Flowers

WILD APPLES

Sweet Crabapple Flowers

Northern Prairie Apricot

Prunus armeniaca var. *mandshurica*

ND, SD Strain Extremely Hardy Manchurian Selection
Seedling apricots were used once in the great windbreak project on the northern plains. The fruiting component was not given much thought but many of these apricots have proven hardy and fruitful even in the land of frost. Need two for pollination. Height 30 ft. Hardy to -30F.

NPAP Pot, 1-2' **\$9.75 each**



Northern Prairie Apricot

Briana Apricot *Prunus armeniaca* *Ecos*

Rich, Tart Apricot Flavor—
Heavy Yielding—Sets Fruit Quickly

True-to-type seed-grown apricot from northern Russia. Fruit produced in dense clusters on short spurs. Small fruited but big in flavor, Briana has the richest taste of any apricot we have ever grown. Few disease/insect problems. You need two for pollination. Height 25 ft. Hardy to -30F.

BRAP Pot, 6-12" **\$8.75** 12-18" **\$10.75** 18-24" **\$14.75**



Briana Flowers

Briana Fruit

Myidaho Apricot *Prunus armeniaca*

Heirloom Strain Handed Down from
Seed to Seed—Save-a-Pit Foundation

Often apricots and peaches were grown from seeds, as this was a more reliable way of propagating stone fruits. Myidaho was selected from a mixture of both cultivated and heirloom apricots found in Idaho. We were fortunate to receive these many years ago from an apricot lover. Although they did not turn out to be as peach-sized as we thought, they are well-adapted to the north. Perfect blend of sweet and tart. Special thanks Emily for finding additional germplasm to add to our collection. Height 25 ft. Hardy to -30F.

MYAP Pot, 1-2' **\$12.75**



Myidaho Apricot

Siberian Apricot *Prunus sibirica*

Dwarf Species Used for Oil-Seed Production
The kernels have been used for extracting a cooking oil, the taste is like almond oil. The seeds drop out when the husk splits, just like almonds. Fruit is bitter. First tree to blossom in spring. Ornamental. Height 8 ft. Hardy to -30F.

SIAP Pot, 6-12" **\$6.75** 12-18" **\$8.75** 18-24" **\$10.75**



Siberian Apricot

Ecos Red *Malus species*-Grafted

Dessert-Quality, Fine for Fresh Eating
Good Insect and Disease Resistance

A chance seedling was found in a planting bed of *Malus coronaria*, it is the only eating apple at our farm that has produced clean fruit without spray in many years. Foliage is highly resistant to insect damage and fungal diseases. Juicy, McIntosh-type flesh. Rounded crown.

Height 25 ft. -30 F. **ERAP** Pot, 18-24" **\$17.75**



Ecos Red Apple

Strawberry Applecrab *Malus x domestica* *Chenango* A Tough and Durable Apple

This unique apple seedling is part tiny fruited but extremely durable Japanese crabapple with *Chenango*, one of the parents of Red Delicious. The resultant strain shows excellent leaf health with no fungal problems. 1-2 inch red or green fruits good for jelly or juice. Will fruit in 3-4 years and readily pollinate other apples. Height 25 ft. -30 F.

STAP FG, 2-3' **\$9.75** 3-5' **\$12.75**

Sweet Yellow Applecrab *Malus x hybrid* Sweet Bright Yellow or Green Mini Apple—Clean Foliage

This seed strain is among the yellow wax crabapples, which tend to produce sweet fruit that can be eaten fresh or used for sauce. Fruits are produced in great abundance, usually free from insect damage (rare in the world of *Malus*). Height 25 ft. Hardy to -30 F.

SYAP FG, 2-4' **\$12.75**

Sweet Crabapple *Malus coronaria* *Ecos*

Sweet Flowers & Tart Fruit—Heavy Producer of Hard Green Apples

This North American apple is rarely grown for its sharp fruit but can be made into a jelly or sauce. No need for pectin but bring the sugar. Selected from a straight-trunk form with a dense, round crown and clean green fruit. Height to 20', -25 F.

SWCR-E Pot, 3-6" **\$3.75** 25+ **\$2.25**

Dolgo Crabapple *Malus 'Dolgo'* Selected Tart Crabapple from South Dakota—Fruit Used for Jelly

This crabapple is a good selection for large fruit yields, for making a tart red jelly or juice. Produces clean red 1¼ inch fruit without spray. Ripens in July and August. Trees tend to have a wide, flat-topped growth. Height 15 ft. Hardy to -40 F.

DOCR Pot, 18-24" **\$9.75**



Dolgo Crabapple



Sweet Crabapple

CHERRIES

Chokecherry Fruit

Mont Sour Cherry *Prunus cerasus* Bright Red Fruit

Mont: Mountain strain of the wild sour cherry where it intergrades with shrub forms in higher elevations. Leaves retain a thick gloss that stays on all summer. Worth experimenting with for fungicide-free sour cherry production. Similar to cultivated sour cherries, with smaller leaves. Height 20 ft. Hardy to -25 F.

MSCH Pot, 6-12" \$10.75

Pin Cherry *Prunus pennsylvanica*

North America's Sour Cherry—Red, Shiny Bark—Western U.S. Seed Strain
Small-fruited and extremely tart, this species is used for jelly. Easy to grow, pin cherry will begin fruiting in 2-3 years. Despite the low flesh to pit ratio, this plant makes a delicious drink high in antioxidants. Height 30 ft. Hardy to -50 F. **PICH** 18-24" \$7.75 each

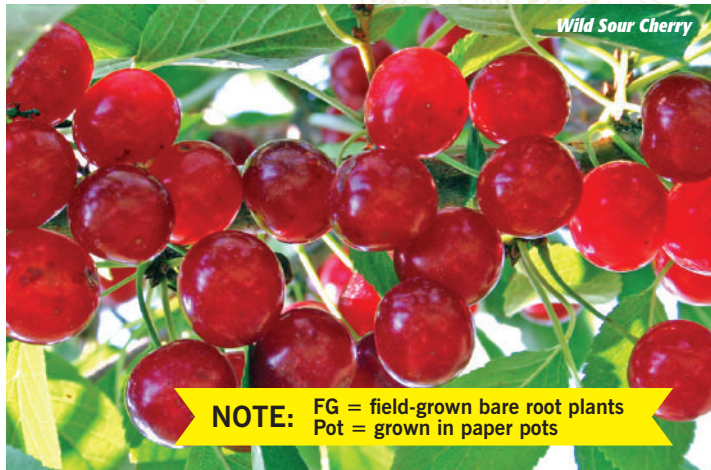
Wild Red Sour Cherry *Prunus cerasus* Ecos 'Mercedes'

Heavy Fruiting Strain From Seed—Low Insect Damage—Excellent Fresh
This wild strain of the common pie cherry was a great find for us, combining the best of flavor and productivity with disease and insect resistance. Fruit is smaller than Montmorency—great for fresh use, pies, jam, and juice. Southern Michigan origin. Height 15 ft. Hardy to -25 F.

WRSC Pot, 6-12" \$8.75 12-18" \$10.75 18-24" \$12.75 25+ 4-12" \$4.25



Pin Cherry Flowers



Wild Sour Cherry

NOTE: FG = field-grown bare root plants
Pot = grown in paper pots



Yellow Sweet Cherry (see website)

Forest Sweet Cherry *Prunus avium*

Vigorous Timber Selection from Denmark

Timber form of the common sweet cherry. Hard, reddish brown wood is easily worked and is considered among the top-rated European timbers. 'Forest' is a seed strain using the most vigorous plants from its most northern range. Dark black 1/2 inch sweet fruit. Height 80 ft. Hardy to -25 F.

FSCH Pot, 4-12" \$8.75 1-2' \$10.75 25+ 4-12" \$5.25

German Sweet Cherry *Prunus avium* Germany

Wild Seedling Strain with a Clean Bill of Health and a Strong Flavor

This is the tested, virus-free form of wild cherry found in Germany. These selections represent the uncultivated form found in central Europe, often used for rootstock, ornamentally, or for the production of flavored syrup. 1/2 inch dark purple-black fruit. Height 40 ft. Hardy to -25 F. **GSCH** Pot, 6-12" \$8.75

Sesquehana Sandcherry *Prunus susquehanae*

Prunus susquehanae

Larger Bush-Type Sand Cherry
Free from Insect Damage

Hard-to-find—may be simply a natural variant. Fruit is of good quality to eat fresh and is produced on a 4 ft. tall upright bush. Our seeds were collected from a bush form near Lake Superior. Full sun. Dry soil. -40 F.

SESA Pot, 1-2' \$9.75

Dwarf Sandcherry *Prunus pumila*

Dune and Shoreline Species,
Highly-Productive Anywhere,
Fruits after 1-2 Years

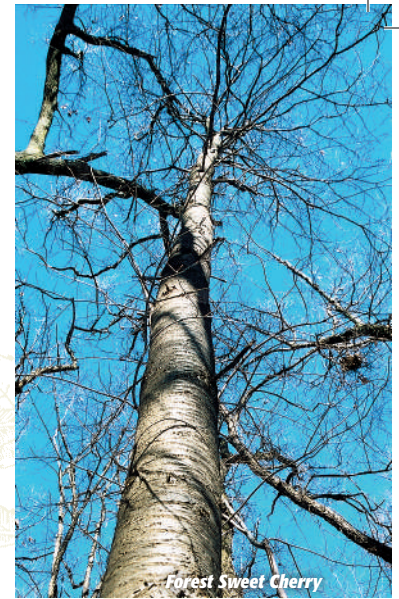
Sand cherries are common in Michigan, found growing in dune environments and usually fruiting in great quantity. Primarily used for jam or jelly. Prefers full sun. Plant two best for fruiting. Height from 3 to 18 inches. -25 F. **DWSA** Pot, 1-2' \$9.75



Dwarf Sandcherry Form



Sandcherry



Forest Sweet Cherry



Sesquehana Cherry



Dwarf Sandcherry Flowers



WILD PEARS

Lecont Pear *Pyrus x lecontei* *Ecos*
Heavy-Fruiting Wild Pear from Michigan
Great for Pear Sauce

The Florida sand pears came from this cross which are considered 'pie pears' by people who collect them. Produces 1-inch yellow, sweet-tart fruit. We found this seedling tree grown from a group of tall wild pears in a hedgerow in SW Michigan. Produces uniform seedlings with no insect or disease. Height to 40 ft. Hardy to -30 F.

LEPE Pot, 3-6" \$4.75 each 25+ \$2.75 each



Lecont Pear

Almond-Leaf Pear *Pyrus amygdaliformis* *Ecos*
Highly-Productive Gritty-Green Deer Pear

Extremely tough spur-type tree that looks like an oak tree. Produces hard, barely-human-edible 1-2" tart pears, remaining good through December. The fruits are produced on short spurs all along the branches. Extremely dense wood. Dense clusters of flowers in the spring. Height 20 ft. -25 F.

ALPE Pot, 3-6" \$4.75 FG, 3-4' \$14.75



Almond-Leaf Pear

Winter Pear *Pyrus communis* *Winter Nelis* *Belgium*
Late-Ripening, Stores Well—Great for Sauce

Like apple, the common pear has produced thousands of varieties all from seed, mostly from wild trees. Winter pear is one of those. Russet-type fruit stores well late into the winter. Can be eaten fresh but normally processed into pies and sauces. Best adapted in the north. Height 25 ft. -30 F.

WINP Pot, 18-24" \$8.75



Winter Pear

Ecos Pear *Pyrus x hybrid* *Ecos*
Greatest Genetic Diversity—For Sauce,
Juice and Fresh Eating

Our Ecos pears were developed from a single tree in Michigan whose Pakistani origins crossed with neighboring Asian and European pears to create this massive genetic mix. Fruits vary from 1-3 inch in size. Fruit is slightly tart and delicious processed into sauce. Tolerant of every soil type except wet. If you love grafted uniformity then run away. Height from 30-50 ft. Hardy to -35 F.

ECPE-S Select. Pot, 4-12" \$6.75 Selected from just trees w/ large fruit.
FG, 3-6" \$31.25 Bundle of 25 (\$1.25 each)

ECPE-M Mixed. Selected seed grown from every fruit type imaginable.
FG, 6-12" \$31.25 Bundle / 25 (\$1.25 ea.)
FG, 12-18" \$7.75 FG 3-5' \$12.75



Ecos Pear



QUINCES

Flowering Quince

Chinese Quince *Pseudocydonia oblonga*
Michigan Seed Source—Giant Quince

Small ornamental tree produces soft pink flowers, with the largest quince—up to 3 lbs. The fruit has many uses, one of which is mixing with ginger and drinking as a beverage. In its native China the fragrant fruit is used for candy and the hard wood is used for picture frames. Grow as a tree. Height 15 feet. -20 F.

CHQU Pot, 3-6" \$4.75 Pot, 3-5' \$14.75



Chinese Quince

Flowering Quince *Chaenomeles speciosa x japonica* *Ecos*

Seed Selection for Heavy Fruit
Production, Pink Flowers, Frost-Resistance

It took a few years to find this fruitful selection of ornamental quince, as many are sterile. This selection can be used for fruit production. Fruits are extremely dense and retain their quality all winter. Use as a jelling agent only, this fruit has little flavor. Favored by whitetail deer in February. One of the hardiest and most durable species we have. Height 8 ft. -30 F.

FLQU Pot, 4-8" \$6.75



Lemony Quince Flowers

Lemony Quince *Chaenomeles lagenaria* *Ecos*
Lemon-Flavored Fruit—Tart Like
There is No Tomorrow

Cooked and pureed with some sugar, you end up with a lemon concentrate that is a great flavor additive. The flavor is almost identical to lemon. Loaded with pink, orange or red blossoms in early May. After 25 years they stand only 2-3 ft. tall, with equal width. Self-fertile. -25 F hardiness.

LEQU Pot, 6-12" \$7.75 25+ \$4.25



Lemony Quince

Cathay Quince *Chaenomeles cathayensis* *Ecos*

Hard, Dense Fruit—High in Fiber,
Pectin—Used for Candy, Jelly, Flavoring
From Central China—the fruits are cooked and blended with apples and other sweet fruits to gel. Bright pink flowers in early spring. Upright columnar growth habit. Self-fertile. Our Ecos strain is hardy in zone 5 plus resistant to fireblight. -20 F hardiness.

CAQU Pot, 6-12" \$7.75 25+ \$4.25



Cathay Quince

STRAWBERRIES

European Woodland Strawberry

'Kelly's Blanket' Wild Strawberry

Fragaria virginiana Ecos

Dwarf Groundcover Strawberry Produces Runners in Great Quantity Vigorous-growing groundcover strawberry from central Michigan produces prodigious amounts of runners per plant—three times that of other wild strains. Height is roughly half that of most wild strawberries, so not overwhelming to other perennials. Small flowers adorn the plant in spring followed by a small crop of berries. -30 F.

KBST Bundle of 25 plants, FG \$18.75



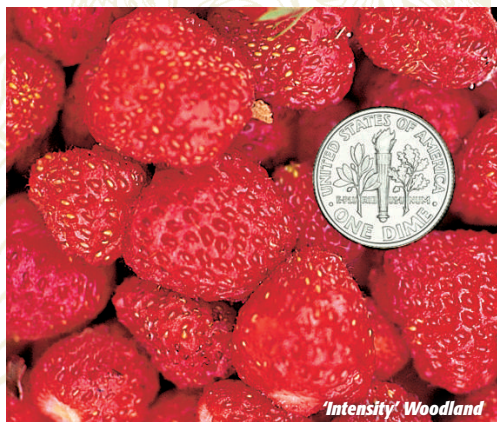
'Kelly's Blanket'

'Intensity' Woodland Strawberry

Fragaria vesca Ecos

Self-Fruitful Woodland Strawberry—Large Fruit Best selection we have found in searching for a larger wild berry, noted for its intense, rich and full fruit flavor. With excellent tolerance to shade, this strawberry is taller-growing, reaching 12" in height. It fruits in clusters over a 2 week period. Michigan selection, hardy to -30 F.

INST Bundle of 5 plants, FG \$7.75



'Intensity' Woodland

Wild Strawberry Ecos

Fragaria virginiana Ecos

Selected Wild Plants with Improved Fruiting—Wild Flavor—Great Taste

There are very few wild food plants that provide a more universal appeal than the wild strawberry. Growing them under cultivation proved a challenge. Why no fruit? No one really looked at the pollination issue. Our Ecos selections were made to create a fertile wild patch by using a diversity of fruitful selections that were also good pollen producers. This was the best way to get that wild strawberry flavor en force. Hardy to -30 F.

WIST Bundle of 25 plants, FG \$18.75



Wild Strawberry Ecos

Creamy Strawberry *Fragaria viridis*

This Russian strawberry is well known for its flavor and acidity. It is widely collected and harvested in a slightly 'green' state with the calyx on when it is ripe. Small fruit. We send mixed seedlings for best fruit set. Unknown productivity under cultivation. Hardy to -20 F.

CRST Bundle of 3 plants, FG \$7.75



Strawberry Flowers

Woodland Strawberry

Fragaria vesca Ecos

Diverse Seedling Progeny—Best for Fruit Production Found in oak and hickory woodlands throughout North America. The fruit size varies from 1/4" to 1/2". The quality of fruit is very good for eating fresh or making jam. This is a mix of larger fruiting types found in SW Michigan. Having a variety of seedlings increases productivity. -30 F.

WOST Bundle of 25 plants, FG \$18.75



Woodland Strawberry

Virginia Strawberry *Fragaria virginiana*

This species selection came to us from a plant collector who discovered it on a hike in the hills. Very good fruit size, 1/2 to 3/4". Rich wild flavor. This would be a good species to add for increased fruit set with other wild strawberries as well. The leaves are larger with this selection plus it has good runner production. -20 F.

VIST Bundle of 10 plants, FG \$12.75



Strawberry Flower

European Woodland *Fragaria vesca* v. *vesca*

Delicious Wild Strawberry Flavor—Highly Vigorous Northern form of wild strawberry found in Russia, Poland and France in dense forests and alpine meadows. The fruit is collected where large colonies exist. The 'wild type' flavor is very powerful and it is used for jam and fresh eating. Shade tolerant. Two a must for pollination. Our plants are produced from seed so each plant is fertile. Vigorous growing. -25 F.

EWST Pot, \$3.75 each



European Woodland Strawberry Habit



Wild Strawberry Ecos

STRAWBERRIES

Red Wonder Strawberry

Fragaria alpina

Red Alpine—Rich, Wild Flavor—
Large for an Alpine Strawberry

Long, thin red wild berry up to 1/2 inch size. Small in the strawberry world but sweet. A clump-forming strawberry and can be produced from seed. This alpine form is best in cool season areas and fruits the heaviest in the spring. Some light fruiting occurs in the summer and fall. Hardy to -20 F.

RWST Pot, \$3.25 ea. 25+ \$2.25 ea.

RWST-S Packet of 200 seeds \$3.75



Red Wonder



Yellow Wonder

Yellow Wonder Strawberry

Fragaria alpina

Sweet Yellow Fruit—With Less
of the Fruit Lost to Birds

This seed-grown selection produces a very sweet, medium sized yellow fruit. The flavor is divine to say the least. Keep the fertilizer away as this only makes the fruit bland. Fruit is 1/2" to 1 inch long. Fruits heavily in the spring w/ a light crop in the fall. Not bothered as much by birds, who don't know the fruit is ripe. Hardy to -30 F.

YWST Pot, \$3.75 each 25+ \$2.25

YWST-S Packet of 200 seeds \$3.75



Alpine Strawberry Flowers

Musk Strawberry *Fragaria moschata*

Wild Flavor—Shade Tolerant

Produces 1/2" violet or red aromatic fruit with a very strong wild strawberry flavor, similar to a currant. Cultivated to some extent. We send mixed seedlings including varieties to insure pollination and complete fruit set. The most robust strawberry we grow, with thick hairy leaves and one foot tall flower stalks, with 6-10 flowers per plant. -20 F.

MUST FG, bundle of 10 plants \$8.75



Musk Strawberry

Italian Alpine Strawberry *Fragaria alpina*

Aromatic Bright Red Berries

This edible ornamental strawberry is found in alpine meadows across northern Europe. The flavor is just the right balance of sweet and tart. Spring production can be very high per plant with multiple clusters of fruit ripening over a long period. Best in zones 3 to 6. Full sun for fruit. -30 F.

IAST Pot, \$3.75

Northern Star Strawberry

Fragaria Ecos

Wild Hybrid With Delicious Fruit

Selected from a seedbed of "Kent" seedlings, Northern Star is a composite of 10 different seedlings known for their very vigorous runner production and wild flavor. Fruits are larger than most wild species yet still have that strong flavor. Hardy into the most northern areas of strawberry production. Zone 3. Overheard "Ken, this is the best strawberry I have ever eaten. No, really." Hardy to -30 F.

NSST FG, bundle of 10 plants \$7.75

Mr. Zuks Strawberry *Fragaria*

From Monticello

This selection is said to go back to Thomas Jefferson; it was considered one of the better cultivars adapted to North America. We do not have it fruiting yet, but the plants are robust with thick rootstocks. Produces a bright red glossy 1" berry 'remarkable' in flavor. Time will tell how remarkable is remarkable. Hardy to -20 F.

MZST FG, bundle of 3 plants \$7.75



Italian Alpine Strawberry



Woodland Strawberry Flowers



NOTE: FG = field-grown bare root plants
Pot = grown in paper pots

'Intensity' Strawberry Fruit

CURRANT & GOOSEBERRY

'Riverview' American Black Currant

Ribes americanum Delicious Wild Black Currant from the Big Sioux River in South Dakota USDA NRCS selection from riverplain populations in Zone 4a. Long racemes of fragrant yellow flowers appear in April with fruit ripening here in early August. Can be eaten fresh or cooked. Very high in iron, minerals and antioxidants. Usually found in wetlands in the shade of other plants, it can be cultivated with ease in any soil. Immune to white pine blister rust. Two is better for this species to fruit. Light shade appears better for yields as well. Height to 3-4 ft. with equal spread. -30 F hardiness.

RABC Pot, 3-6" \$7.25 25+ 2-4" \$3.50



'Riverview' Black Currant



'Riverview' Black Currant



Northern Gooseberry



Missouri Gooseberry

Northern Gooseberry

Ribes oxycanthoides var *callicola* Ecos
Tart, High-Energy Fruit—Great for Pies
Can Grow and Fruit in Light Shade

Excellent-flavored native gooseberry with 1/2" dark red-purple fruit. Our Ecos selection is from the Western Upper Peninsula in Michigan, selected for large fruit size and yield. Immune to blister rust. Best to plant two for pollination. Height 2-4 feet. Hardy to -40 F.

NOGO Pot, 3-6" \$5.75 25+ \$3.25
6-12" \$7.75 1-2 ft. \$9.75

Missouri Gooseberry *Ribes missouriense* (gracile)

Smooth Black Gooseberry—Delicious Sweet and Tart Flavor—Yields Well Under Cultivation One of the best-flavored species gooseberries, Missouri is one of the few native Ribes that were cultivated at one time. The berries were used mostly for preserves and pies. The dark purple berries ripen in July and have to be very delicately plucked from the thorny branches. Good fresh or processed. Best to let the fruit fully ripen on the bush to mellow the acidity. Resistant to blister rust. Height to 5 feet. -25 F Hardiness.

MIGO Pot, 3-6" \$5.75 8-12" \$7.75
1-2' \$9.75 25 + 3-6" \$3.75

See our website for add'l varieties of many plants.

RASPBERRIES

Black Raspberry *Rubus occidentalis*

Prolific Fruiting, Great for Jelly—Fresh Eating
Common species found in many a field where it forms dense colonies by tip layering its way along. Although seedy, the flavor is very good with a strong raspberry taste. It can be used to make pies, jams and jellies, and the leaves make a good tea. -30 F hardiness.

BLRA FG, 2' whips Bundle of 3 \$7.75



Black Raspberry

Yellow Black Raspberry *Rubus occidentalis* Flava

Beautiful Yellowish Fruits—Mild Flavor

A variant of the wild black raspberry. Easily spotted with its yellow fruits and light green canes. The flavor is milder than the black raspberry. Fruits can ripen from yellow, orange, red and black. Foliage is clean of disease with this strain plus it does not spread as much as the pure black.

Hgt. 5-6 ft. Hardy to -25 F. **YBRA** Pot 4-8", \$6.75 ea.



Yellow Black Raspberry

Northern Red Raspberry

Rubus strigosus Tahquamenon Strain Ecos
Rich, Strong Flavor—Small Seeded

One of the best-flavored raspberries, with tiny seeds and flavor like thimbleberry. Stoliferous selection that grows slowly outward. Canes live for 2-4 years before new canes are generated from the roots. Easy to propagate by root cuttings. Seeds originally came from a bird drop 'planting' and make up about 25 genetically-different types now growing at our farm. -35 F.

NRRA FG, 1-2' Bundle of 3 \$12.75



Northern Red

Purpleflowering

Purpleflowering Raspberry *Rubus odoratus*

Best Ornamental Rubus—Makes No Thorns

Native raspberry with pink-purple, fragrant, 2-inch flowers found growing in rocky woods in shaded areas. Easy to cultivate but fruits very little for unknown reasons. Similar in flavor to thimbleberry. Forms a dense colony. 4ft height. -30 F. **PFRA** FG, 2-3' whips \$8.75 each

Wine Raspberry *Rubus phoenicolasius*

Jam or Jelly—Brewed into Wine—Sweet Flavor for Fresh Eating
This highly-productive Japanese species is known for its delicious, juicy, sweet fruit which are hidden in a 'husk' until ripening time. Plants are remarkably free of diseases and insects. Fruit makes a very colorful sweet jelly and wine. Tolerant of light shade. Tip layers and stolons. Seed originally from South Korea. Height 5 ft. Hardy to -20 F.

WIRA Pot, 3-6" \$5.75 25+ \$3.25 FG, 2-4' \$7.75



Wine Raspberry

WILD ROSES



'Wild Thing' Rose Hips

Prickly Wild Rose Hip

Prairie Rose *Rosa arkansana var suffulta*
Durable Shrub Rose—Easy to Grow in a Variety of Climates

Pink flowers and red hips are reliably produced with this prairie shrub. Rarely will you find a rose that can tolerate so much and come out 'smelling like a rose.' Immune to black spot and aphids. The petals were used for tea by the Lakota and the hips were gathered in times of famine. Height to 5 ft. Hardy to -30 F.

PRRO Pot, 8-12" \$7.75



Prairie Rose Flower

Big Hip Rose *Rosa x pomifera-villosa Ecos*
Large Hips Produced in Clusters

Selected from Apple Rose, Big Hip produces decent-sized fruit on a small plant. The seeds can be easily scooped out and the hip can be blended with other juice to make a healthful drink rich in Vitamin C. Best in full sun in exposed sites. Big Hip plants runner very lightly, if at all. Clean foliage. Height 2 ft. -30 F hardiness.

BHRO Pot, 6-12" \$6.75 1-2' \$8.75



Big Hip Rose

Prickly Wild Rose *Rosa acicularis* North. Michigan Strain
Fragrant and Easy to Grow Running Rose

Medium-sized bright red hips are regularly produced on a small plant. Plants spread slowly by stolons, fruiting in 2-3 years. This circumpolar species was harvested for its vitamin rich fruits as well as its flowers to make a 'calming' tea. Seeds selected by using productive small plants. Heights range from 1-3ft. Very hardy, to -40 F.

PWRO Pot, 4-8" \$4.75



Prickly Wild Rose

Wanigas Swamp Rose *Rosa palustris 'Wanigas' Ecos*

This compact form of swamp rose was found as a standout chance seedling in a wetland in central Michigan. The bright reddish purple fall color and dense growth habit make it unique. The petals have a delicious floral flavor—a great addition to green tea. Easy to grow outside of a swamp. Not a huge hip producer usually. 3 feet in height. Hardy to -30 F.

WSRO Pot, 6-12" \$6.75 25+ 3-6" \$3.25 each



Wanigas Swamp Rose

JUNE BERRIES



Tree Serviceberry *Amelanchier laevis x grandiflora Ecos* Fast-Growing Hybrid Cross—Great Taste

We received this large tree selection from seedlings purchased through an east coast nursery about 30 years ago. The fruit production is very high, making it a favorite of birds. The reddish purple fruit is very sweet and makes a delicious sauce. Our parent tree has produced numerous seedlings now and these are true to type from seed. Produces few seeds. Height 50 ft. -30 F. **TRSE** Pot, 4-8" \$7.75

Pancake Bay Allegheny Serviceberry *Amelanchier laevis Ecos*

Delicious for Fresh Eating—Large Dark Blue Fruits Produced in Abundance Best-quality fruiting tree serviceberry, consistently producing clean fruit with the perfect balance of sweet and tart. Large half inch fruit are produced in dense clusters all over the tree. Vigorous selection that has clean foliage throughout the summer. Found as a seedling tree along the shores of Lake Superior where the fruit had created a large area of blue stained rocks. Best in zones 3-6. Hardy to -30 F. **PBAS** Pot, 4-8" \$7.75

Keweenaw Allegheny Serviceberry *Amelanchier laevis-canadensis group - Ecos*

Reliable Fruit Producer—Tree Serviceberry—Indian Pear Specifically collected from trees with good fruit production in the rocky Keweenaw Peninsula in the upper peninsula of Michigan. We created a small planting of these about 25 years ago and have enjoyed the delicious small- to medium-sized reddish purple fruits. Keweenaw produces multi-trunk trees to 20 feet that are extremely durable and fruitful, even with late frosts. -40 F.

KASE Pot, 4-8" \$7.75



Pancake Bay Fruit



Allegheny Serviceberry Flowers



Tree Serviceberry Fruit

JUNE BERRIES

Blue Profusion Juneberry

Amelanchier arborea Ecos

Selected from a batch of juneberry seedlings that fruited heavily in 3 years from seed, this tree type offers a heavy yield on young trees. Dark blue fruits are produced in dense clusters throughout the tree. Trees are somewhat dwarf, with sprouts forming near the base. This would be a good orchard type too. Nice mellow sweet flavor. Hardy to -40 F.

BPIJU Pot, 4-8" \$7.75

Apple Serviceberry

Amelanchier x grandiflora
Single-Trunk Tree to 40 feet Height
Sweet purple or black fruits. Excellent yield from this tree, with good quality berries. Seed was collected from a large tree found in the wild with massive fruit set in New York. Begins producing in 5-8 years. Vigorous seedlings. Hardy to -30 F.

APSE Pot, 18-24" \$9.75 2-4' \$12.75

'Success' Running Serviceberry

Amelanchier stolonifera

Great Fruiter for Midwest and Northeast
"Success" is an excellent dwarf serviceberry from Kansas. Seedlings produce a dark purple fruit about 1/2" in diameter. Fruit quality as good as the Canadian varieties, plus it is much more fruitful in Michigan. Has a mild almond aftertaste when cooked and made into sauce. Yields have been high. Keep this plant out in the open in full sun for best yields and fruit quality. Height 6 ft. Hardy to -40 F.

SRSE Pot, 4-8" \$7.75 25+ \$3.75



Blue Profusion Juneberry



Apple Serviceberry



'Success' Serviceberry



Juneberry Flowers in Spring

Sweet Blue Saskatoon

Amelanchier alnifolia 'Sweet Blue' Kurath Strain

Reliable—Prolific—Sweet Apple Flavor

Found as a chance seedling near Ann Arbor, this selection produces much more fruit than the Canadian selections, with a mild, sweet flavor. 3/8 inch size fruits produced in dense clusters. Less prone to fungal diseases. Plants runner slowly reaching a height and width of 10 ft. after 15 years. Dense caning habit. Hardy to -30 F.

SBSA Pot, 4-8" \$7.75 each



Sweet Blue Saskatoon

Northline Saskatoon

Amelanchier alnifolia

High-Quality Large Fruits—Heavy Producer from Most Northern Selection
Northline represents the true saskatoon originally found near Beaverlodge, Alberta, Canada. Fruits are very good quality for fresh eating. The fruits from this selection are one of the best flavored—not mealy or bland. Best to plant in full sun, in sandy soil. Does best in zones 2 to 5. Hardy to -40 F.

NOSA Pot, 8-18" \$9.75



'Regent' Saskatoon

Canada Saskatoon

Amelanchier alnifolia

Saskatoon fruits are used for wine, sauces, pies and jam. Fruits are abundantly produced in long clusters. Plants do best in cold, cool climates with low summer humidity. Our Canadian selections are grown from seed from Smokey—a great selection for its fruit quality and yield. Plants fruit in 1-3 years. One of the hardiest fruits of the northland, taking -50 F. Height to 10 ft.

CASA Pot, 3-6" \$7.75 2-3' \$9.75



'Regent' Saskatoon

'Regent' Saskatoon

Amelanchier stolonifera Regent

Consistently High-Quality Fruiting—Prolific

This cultivar is one of the oldest cultivars we have fruiting at our farm. Regent has both high yields and good quality fruit. Smaller shrub-type Saskatoon matures to 4-6 ft. tall. Dark blue fruit is produced in long clusters. Very easy to harvest. Saskatoons have ten times more vitamin C than blueberries. -35 F.

RESA Pot, 4-8" \$7.75 each



'Regent' Saskatoon Fruit

See our website for add'l varieties of many plants.

SHRUB CROPS—BERRIES

NITROGEN-FIXING

Lead Plant *Amorpha canescens* Prairie Legume—for Tea

Very easy to establish. Provides high quality forage. Foliage makes a pleasant-tasting yellow colored tea. Roots are extensive forming a colony of plants in 3-4 years. Can be treated like a perennial. Mowing or cutting will further enhance the amount of nitrogen available to nearby plants and increase its growth. Height from 1-2 ft. -25 F.

LEPL Pot, 1-2' \$7.75 2-3' \$9.75

California False Indigo *Amorpha californica*

Wild Tea—Hardy Nitro-Fixer—Butterfly Plant
Very durable drought-tolerant legume completely winter hardy in Michigan. Can be cut every 3-4 years to stimulate growth and further add its nitrogen to the soil. The flowers and leaflets make a mellow flavored tea. Clean foliage with upright 6 inch flower spikes. Broad-spreading shrub to 6 feet tall. Hardy to -20 F.

CFIN Pot, 1-2' \$7.75 2-3' \$9.75

CFIN-S Seeds 1oz.—about 1000 seeds \$9.75

For planting seeds: cover with 1/8" of soil. Seeds will sprout without pretreatment in 1-2 weeks at 70 degrees F. Some with hard seed coats will come up the following year.



Leadplant

Seaberry *Hippophae rhamnoides*

Healthy Fruit—High in Vitamins and Minerals—Grow Your Own "OJ"
Nitrogen-fixing plant used extensively for its healthy fruit with 15 times the vitamin C of oranges. Fruits also contain high levels of vitamin E, carotenoids, minerals and polyphenols. Small, tart fruits are harvested for drinks, juices and jellies. Fruiting begins in 1 to 3 years from planting. The astringent fruit is best to let fully ripen with a few frosts and then process into juice. Dioecious. Unsexed seedlings. Height 4-8'. Full sun. -30 F.

SEAB Pot, 1-2' \$7.75



Seaberry



Seaberry Fruit Detail

Silver Buffaloberry *Shepherdia argentea* Ecos

Nutritious—Rich in Antioxidants—
Vitamin Packed—Tart Red Fruit

Fruit is high in vitamin C and similar in quality to autumnberry. Small red or yellow 1/4" berry with a single seed. Can be eaten fresh. Plants sucker outward over time, spreading by stolons. Our Ecos selections were originally found in Idaho. We kept the best seedlings that had good leaf retention throughout summer. Ecos fruits heavier than other selections we've tried. The fruits ripen in August. Dioecious. Unsexed seedlings. -35 F.

SIBU Pot, 8-18" \$7.75

Sakakawea Silver Buffaloberry

Shepherdia argentea

Nutritious Vitamin-Packed Berry—USDA Selection from Manitoba

Delicious, nutritious tart berry used for drinks and jelly. Sakakawea produces a fruit like seaberry, high in vitamins and minerals. Makes a delicious drink or tart jelly which is similar in flavor to red currant. This selection is not astringent when fully ripe. Fruits are produced in clusters, on spurs on female plants. Selected for its vigorous growth, yield and survival in out plantings. Nitrogen fixing shrub. Dioecious. Unsexed seedlings. Hardy to -40 F.

SSBU Pot, 8-18" \$7.75

Red Cluster Autumnberry

Elaeagnus umbellata Ecos

Heavy Producer of Bright Red Fruit

This selection from southern MI produces dense clusters, making it easier pick with much higher yields per plant. Discovered as chance seedling growing amid thousands of other plants. Tart, bright red fruit high in lycopene. Retains its berries late into November with little loss in quality. Heaviest-bearing plant I've ever found. -25 F.

RCAU Pot, 6-12" \$5.75 1-2' \$7.75 25+ 6-12" \$3.25

Red Autumnberry *Elaeagnus umbellata* Ecos

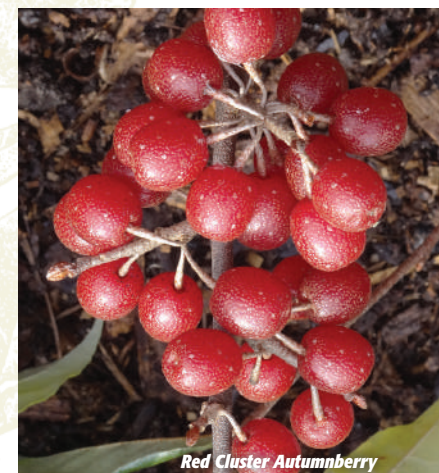
Healthy—High Lycopene—Nitrogen-Fixer

Up to 20x more lycopene than tomatoes, autumnberries make healthful drinks or preserves. Truly one of the easiest plants to fruit in the toughest of soils and climates. Red Autumn produces fruit with less astringency and breeds close from seed. Yields are heavy. Seeds can be eaten once dried down and adds a crunchy texture like sunflower seeds. Seeds are high in phenolic compounds, considered anti-cancer. Self-fertile. Height 12ft. -30 F.

RABE Pot, 12-18" \$5.75 1-2' \$7.75
2-3' \$9.75 25+ 12-18" \$3.25



Silver Buffaloberry



Red Cluster Autumnberry



Red Autumnberry Ecos

SHRUB CROPS-BERRIES

VIBURNUMS

American Cranberry Bush Fruit

American Cranberry Bush *Viburnum trilobum*

Tart, Astringent-Flavored Ornamental—Prolific Fruiting

This species is often processed for jelly. The flavor is strong and it's best to leave the fruit on the bush to freeze a few times before harvesting in winter...then bring on the sugar. Large flowerheads. Dense, thick shrub to 15 x 15ft. -30 F.

Flava American Cranberrybush *Ecos*

Most-northern-part-of-its-range strain from Montana. Seed-grown, this yellow-fruited selection produces a mix of yellow- and red-fruited seedlings that make lots of fruit on a more compact plant. Super-hardy selection, to -45 F.

FLAC FG, 3-6" \$3.75 1-2' \$11.75
3-6" Bundle of 25 \$21.25

Fruitfull American Cranberrybush *Ecos*

Selected strain from native Michigan germplasm which fruited in 3 years from seed. Seedlings are compact and fruit heavily at a young age, with exceptionally bright dark red berries. Height 4-8 ft. Hardy to -30 F.

FRAC Pot, 6-12" \$7.75 25+ 3-6" \$3.75 each

Redwing American Cranberrybush

Grown by cuttings, this Wisconsin selection has good quantities of bright red fruit. Foliage comes out red in the spring and colors red in the fall. Height to 10 ft. with a 6-8 ft. width. Hardy to -30 F.

RACR Pot, 1-2' \$11.75

Nannyberry *Viburnum lentago*

Raisin Flavored Fruit—Ornamental—Fall Color Landscape viburnum known for its glossy foliage and fragrant white flowers. Fruits were mashed and made into cakes, like an energy bar. Grows in a variety of soils, usually found in wetlands. Productive under cultivation. Taste is similar to blackhaw. Plant 2 for pollination. Height to 18 ft. Hardy to -30 F.

NANN Pot, 12-18" \$8.75



Spice Viburnum *Viburnum carlesii Ecos*

Fragrant Flowers—Black Raisin Fruit

This selection was found along a fencerow in southern Michigan. The large clusters of black fruit are produced on long branches from a central trunk. The fruit is small but is sweet and raisin-like with a small amount of pulp. Sweet-spicy fragrant flowers produced in May. Shade-tolerant, will grow in a variety of soils. -20 F.

SPVI Pot, 6-12" \$7.75 18-24" \$12.75

Manchurian Viburnum

Viburnum burejaeticum Ecos
Ornamental—Edible Raisin

One of our favorite viburnums both for its edible fruit and its floral display. Fragrant 4-inch clusters of white flowers are followed by red fruit that turns black when fully ripe. Not a lot of pulp but has a nice sweet blend of prune and raisin. Very productive in the fruit department. Our Ecos selection is more dwarf than the species, reaching 4-8 ft at maturity. Drought-tolerant. -35 F.

MAVI Pot, 6-12" \$7.75



'Summer Magic' Blackhaw Viburnum

Viburnum prunifolium
Wisconsin—Bright-Colored Foliage

Foliage from this rooted selection emerges a light purple in early summer. In the fall the leaves turn bright red. The blue-purple fruit has a raisin-like flavor and can be eaten as they soften in late fall. If you are growing this for fruit, it is best to have another seedling nearby for maximum production. Durable viburnum to grow in a variety of soils. Height 20 feet. Hardy to -30 F.

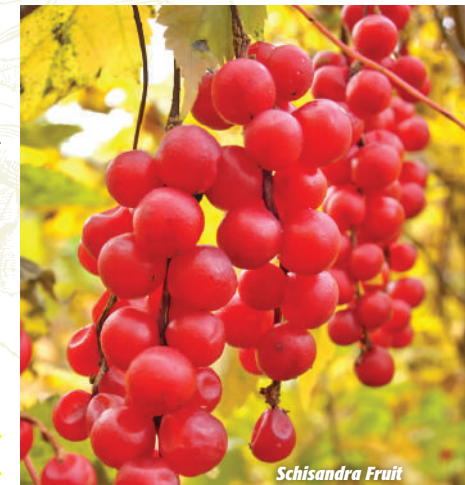
SMBV Pot 6-12" \$11.75



Schisandra Berry *Schisandra chinensis*

Magnolia Vine—Chosen-Gomishi—Five-Flavor-Fruit—Heathful Fruit

One of the healthiest fruits, equivalent to ginseng—a fruit adaptogen. Used in Russia and considered important enough to be included with many types of physical therapy. Fruits are produced on female plants in long clusters which ripen in the fall. The fruit makes a sweet, tart drink rich in antioxidants. Plants grow rapidly quickly yielding fruit in 3-5 years. Like grapes, use a strong trellis system. Shade tolerant. Seed grown-unsexed 3 year plants. Dioecious. Vigorous. Hgt. 100 ft. unpruned. Hardy to -30 F. **SCBE** Pot, 6-18" \$7.75



See our website for add'l varieties of many plants.

SHRUB CROPS-BERRIES

Chokeberry Flowers

HAZELNUTS

'Nero' Black Chokeberry

Aronia melanocarpa Nero

Healthful, Large-Fruited Selection High in Anthocyanin and Iron—Multi-Mineral Berry
The black chokeberry is an astringent fruit known as a wetland plant and rarely consumed fresh due to its barely tolerable 'flavor'. With added sweetness it becomes a fantastic combination of blueberry and cranberry. Nero is a German selection developed for its larger fruits. Can be used for jelly like elderberries can. People who consume it notice increased alertness. Height to 8 ft. Hardy to -35 F.

NBCH Pot, 6-12" \$7.75 12-18" \$9.75



'Nero' Black Chokeberry

White Fringetree *Chionanthus virginicus*

Olive Relative—Pickled in Salt

This fruiting plant is one few olive family members indigenous to North America. Despite its large pit and little meat, early settlers pickled the fruits of this plant when available. Known mostly for its fragrant white blossoms in spring, this eastern plant is often found in woodland environments. Dioecious. Unsexed seedlings. Takes 4-6 years to flower. Height 8 ft, -20 F.

WHFR Pot, 3-6" \$7.75 25+ \$3.75



White Fringetree

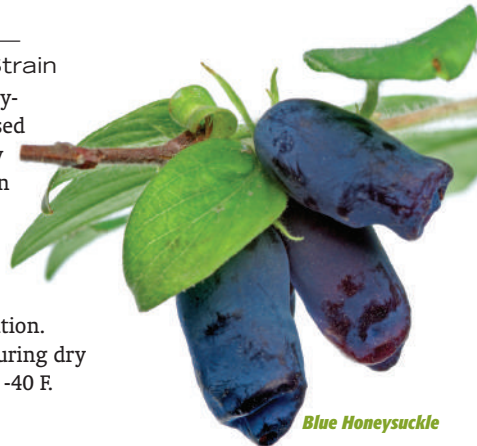
Blue Honeysuckle

Lonicera villosa

Edible Blue-Fruited Honey-suckle—a.k.a. Honeyberry—Mountain Fly—Wisconsin Strain

This is one of the few edible honeysuckles. The tart blue fruits are used like blueberries and contain many health benefits. This fruit is rich in selenium, helpful in preventing certain types of cancer. Bright yellow tubular flowers open up in early spring, pollinated by bumblebees. Need two for pollination. Plant in part shade and irrigate during dry spells. Best in zones 2-6. Hardy to -40 F.

BLHO Pot, 8-18" \$8.75



Blue Honeysuckle

Precocious Hazelnut *Corylus x hybrid Ecos*

Large, Delicious Nuts—Resistant to Filbert Blight—Fruits in 3-6 Years From Seed

Most productive and disease-resistant hazel strain with larger nut size and a thinner shell than the American hazel. Vigorous seedlings produce in 3 to 4 years from seed. Plant two for pollination. Height 12 ft. Hardy to -30 F. **PRHA** Pot, 6-12" \$9.75



Precocious Hazelnut

Beaked Hazel *Corylus cornuta*

Productive Shade-Tolerant Species—Hardy to Minus 40

Beaked hazel is one of the few nut species able to tolerate extreme cold temperatures plus thrive in rather dry conditions with shallow and rocky topsoil. Best suited in sandy soil free from grass. Rich oily flavor. Need two for pollination. Height 6 ft. Hardy to -40F.

BEHA Pot, 18-24" \$9.75



Shelled Hazelnuts

Turkish Tree Hazel *Corylus colurna*

Largest of The Tree Hazelnuts

This species of hazelnut is known as an ornamental tree because of its white flakey bark. It can tolerate a wide range of soil types and is easy to transplant. The trees take 10-20 years to fruit. Large baseball-sized clusters of thick-shelled nuts. Height 60 ft. Hardy to -25 F.

TTHA Pot, 18-24" \$11.75



Young Hazelnut Shrub

NOTE: FG = field-grown bare root plants
Pot = grown in paper pots



American Hazelnuts



Precocious Hazelnuts

PAWPAW

Photo: Trevor Newman



Unique Flowers in Spring

Pawpaw *Asimina triloba* Ecos
Northern Banana—Custard Apple—
Nutritious, High in Potassium and Iron
Flavor and texture is like a banana with a mix of strawberry and custard. For the full effect it is best eaten fresh, fully ripened on the tree. Can be used in breads, cookies and milkshakes. Under cultivation, pawpaw prefers a moisture retentive soil whether in full sun or shade. Highest yields per plant are in full sun. Our Ecos strain is grown from seed originally from the Davis collection of improved fruiting Michigan types—the most northern of its range. Fruit is of good quality with less of a cloying flavor than many wild types. Need two for pollination. 4-8 years to fruit. Height 30'. Hardy to -30 F.

PAPA Pot, 3-6" \$5.75 6-12" \$7.75 FG, 1' \$9.75
Bundle of 25, FG 3-6" \$35.00 (\$1.40 each)



Cluster of Pawpaw Fruit



Tropical-Looking Foliage

Watch our informative video on Pawpaws at:
<http://www.youtube.com/user/OikosTreeCrops>

AMERICAN PERSIMMON



Trees Loaded with Fruit



Distinctive Bark

American Persimmon *Diospyros virginiana* Ecos
Northern Date—Sweet—High-Energy
One of the most luscious and sweetest fruits, containing up to 30% sugar. The astringency or 'puckereeness' decreases and the sweetness increases with ripening. This process is helped with warm summers and a warm fall along with frosts. Grows in a variety of soils, including clay, sand, dry or wet. Tolerant to shade and competition from other plants. Trees begin producing at 6-10 years of age. Few insect or disease problems. Our Ecos selections are from the most prolific plants with early-ripening, good quality fruit. These were made from the most northern seed strains. Dioecious. Unsexed seedlings. Height 70 ft. Hardy to -30 F.

AMPE Pot, 3-6" \$4.75 6-12" \$6.75 25+ 3-6" \$3.25
FG, 18-24" \$8.75
Bundle of 25, FG 3-6" \$21.25 (\$.85 each)

We also have a great video on Persimmons at:
<http://www.youtube.com/user/OikosTreeCrops>



Edible, Ornamental Fruit

TREE CROPS



Mulberry Fruit

Red Mulberry *Morus rubra*

Highly Productive—Long-Lived Native Species with Good Tasting Fruit

People worldwide enjoy the mulberry fruit both fresh and dried. Every country has its favorite. This is the U.S. species, found from TX to IL. The fruits are less insipid than most with some tartness and a less watery flavor. Our seedlings are true, from wild-collected seeds in its native range. 1" red fruits ripen in mid-summer. Vigorous growth to 5' in two years. Need two for pollination. Will cross with other mulberries. Usually female and male flowers on the same tree. Height 50 ft. Hardy to -20 F.

REMU Pot, 3-4' \$14.75



Red Mulberry

Black Mulberry *Morus nigra*

Hardy Form of the Fruiting Cultivated Mulberry

One of the fastest-growing mulberries, 3-5 feet per year until fruiting begins. Lustrous green leaves are clean and free of disease throughout the summer. Both the taste and juiciness of black mulberries—especially the nigra species—are more worthwhile to grow than the seedling mulberries commonly found. The fruit can be larger, reaching up to 4" long on some. Contains 8 percent sugar, and is high in potassium and vitamin C. Fruit is best enjoyed fresh. Height 30 ft. -15 to -20 F hardiness.

BLMU Pot, 4-12" \$6.75 25+ Pot, 3-6" \$2.25 ea.



Black Mulberries

Cornelian Cherry *Cornus mas*

Edible Cherry Dogwood—Fruits in Shade—Highly Productive

Cultivated for use in sauces, preserves, and marmalade, eaten fresh, dried, preserved in syrup, wine, or unripe fruits pickled and made into olives. Like a very very tart cherry. High in vitamin C. Fruits ripen in August. No insect or disease problems with the fruit or tree. Bright yellow flowers in March. Our seed trees were grown from a selection of dark red fruiting types. Very frost-tolerant flowers. Fruits in 3-6 years. Height to 20 ft. Hardy to -30 F.

COCH Pot, 6-12" \$7.75 12-18" \$9.75



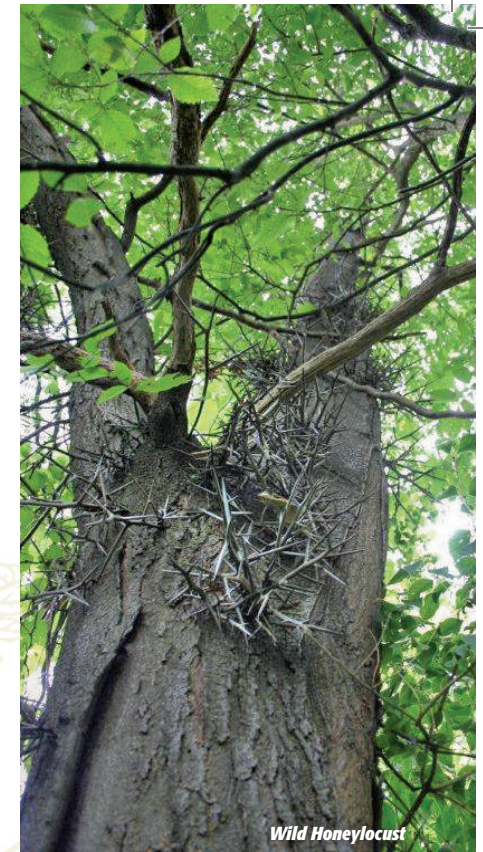
Cornelian Cherry Fruit

Wild Honeylocust *Gleditsia triacanthos*

Nitrogen-Fixing—Wild Michigan Seed Strain—Vigorous—Good Pod Producer

Straight-trunk forest selection. Produces major 6-inch branched thorns on the central trunk. Our seeds are collected from wild stands in a flood plain. Seedlings are polygamous meaning perfect flowers will occur in the tree and pods will be produced. Increase the pod production—plant more than one tree. Very hard and heavy wood. Height to 80 ft. -25 F.

WIHO Pot, 6-12" \$8.75 18-24" \$11.75



Wild Honeylocust

Caspian Locust *Gleditsia caspica*

Extremely Drought-Tolerant—Honey Dripping from Trees

This legume species from Western Asia produces a honey-like sap called 'gaz' that was collected by the Persians during the Alexander-the-Great era. It was made into a candy called Bandar-i-Shah. Massive thorns up to 8 inches long clothe the trunk of the tree. Oh for the love of honey... 8-inch pods are produced. Height 30 ft. Hardy to zone 6 / -15 F.

CALO Pot, \$7.75

Thornless Honeylocust

Gleditsia triacanthos inermis

No Thorns—Good Pod Production

Inermis is one of the sub-species that was used in breeding better pod production for livestock use. Our seeds were collected from wild trees, mostly selections that had few, if any, thorns. Said to be true to seed. This species commonly cultivated as a street tree (usually the podless types). Can be grown with walnuts, oaks, persimmons and pawpaws. Casts little shade. Fixes nitrogen. Height 100'. Hardy to -25 F.

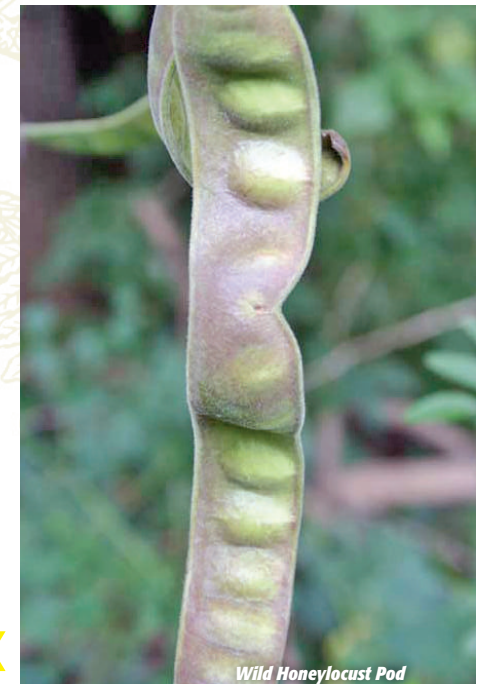
THHO Pot, 6-12" \$7.75

Water Locust *Gleditsia aquatica*

Flood-Tolerant Nitrogen-Fixing Species Found Along the Mississippi River

This rare locust is found throughout the southern U.S. next to rivers and streams. It is one of the few trees that can tolerate standing water. Seeds are consumed by turkey. Wood is very hard, strong with wide rings. Trunk to 2-3'. Grows very fast, 2-3 feet per year. Height 60'. Hardy to -15 to -20F.

WALO Pot, 6-12" \$7.75



Wild Honeylocust Pod

See our website for add'l varieties of many plants.

TREE CROPS



Lotus Berry

Am. Beech Bark

Lotus Berry *Celtis australis* Lotus Fruit—European Hackberry
Cherry-Like Fruit—Largest Fruit of the Hackberries
Although all hackberry species are edible, it's difficult to consume a fruit which is essentially a pit with a little pulp. However, some species have been consumed for thousands of years, especially the cherry-sized fruits of the Lotus Berry. This selection is processed into wine or eaten raw and is used in Spain, Greece and Iran. Said to be very sweet, this species is probably the best for human consumption. Makes a great shade tree. Very disease and insect resistant. Fast growing to 80'. Hardy to -15 F.

LOBE Pot, 1-2' **\$8.75**

Jujube *Ziziphus jujuba*

Chinese Date—Cultivated for Its Sweet, Apple-Flavored Fruit—Highly Durable

Long-cultivated fruit (9000 BC) from the deserts of China, India and the southern U.S., jujube is considered an important 'tonic' fruit as well as a sweet treat. Hasn't really caught the attention of fruit farmers here...there is still an aura of mystery surrounding the fruit. We offer seedlings of the 'wild' U.S. types. Plant may sprout from the root several times before it really takes off, this is normal. Height 20 ft. Hardy to -15 F.

JUJU Pot, 3-6" **\$5.75**

Western Soapberry *Sapindus drummondii*

Oklahoma (Northern Strain)—Soap Plant—Fruits High in Saponins—Strong Detergent

Survives in one of the harshest environments in dry, baked clay with temperatures over 100 F. The 1/2" bright yellow fruit was used to make a foaming soap solution. The wood is strong, heavy, hard and close-grained. The tree highly wind-resistant. Height 30 ft. Hardy to -20 F.

WESO Pot, 8-18" **\$8.75**

Kentucky Coffeetree *Gymnocladus dioica*

Long Lived—Durable—Disease and Insect Free Legume Tree

Fast-growing, averaging 2 ft. per year. The rot-resistant wood was used as fence posts. The Meskwaki tribe used the wax of the pods to cure a patient of lunacy. Early settlers roasted and ground the seeds and used them as a coffee substitute. Produces a large pod with shiny dark brown seeds. Used by cabinet makers—very little sapwood. Height 80 ft., hardy to -30 F.

KECO Pot, 6-12" **\$7.75** 12-18" **\$9.75** 25 + 6-12" **\$3.75**



Lotus Berry Form



Lotus Berry Fruit



Western Soapberry

Black Willow *Salix nigra* Fast-Growing
Roots Easily—Used for Twig Furniture

North American species, a favorite for cane furniture and used for lowland windbreaks. The trees are easily coppiced and average 2-5 ft. of growth per year. Found as a wetland species, it can grow on upland sites too. Rare in cultivation. Easy to limb up. Michigan Source, -30 F hardiness.

BLWI Pot, 3-5' **\$14.75**

Red Willow *Salix x Roesch* Wisconsin Red-Stem Selection
Upright Crown—Vigorous—Clean Foliage

This cutting-grown selection was found as a chance seedling with upright growth and red stems. Develops smooth bark as the tree matures. Less wind breakage with this selection. Tolerant to dry and alkaline soils. Roots easily. Averages 2-3 feet of growth per year. Hardy to -30 F.

REWI Pot, 2-4' **\$12.75**

Vitellina Golden Willow *Salix alba Vitellina* Fast-Growing and Durable

One of many plants worldwide known for its incredible soil-holding ability in wet and dry areas. Fast growing, up to 6 ft. per year. Bright golden yellow stems. Coppiced: used for basket making. Vitellina is the type most often associated as weeping willow but has a more upright growth habit. Long-lived. Height to 60 ft. Hardy to -40 F.

VGWI Pot, 2-4' **\$12.75**



Black Willow



Golden Willow

American Beech *Fagus americana*
The Noble Tree—Long-Lived—Timber Tree—Ornamental

One the most majestic of all American trees, the nuts were used to make a rich butter. Beechnuts are small but delicious and high in oil. American beech prefers a rich deep soil, but is tolerant of other soil types. Nut production begins in 30 years. Heavy, close-grained wood. Height to 100'. Hardy to -30 F.

AMBE Pot, 18-24" **\$9.75**



American Beech



Red Willow

OAKS FOR ACORN PRODUCTION

Burgambel Oak Acorns

Less Astringent—Better Productivity

Quest for the sweetest acorn should start here. These can be processed for use as flour by blending, soaking and decanting the tannins. Starting in 1980 we started planting oaks for the purpose of finding and creating more fruitful oaks with low tannin, non-bitter acorns.

These selections are the result of these plantings.

Ashworth Bur Oak

Quercus macrocarpa 'Ashworth' Ecos Incredibly Productive
Noted for small, sweet acorns and high yields. Successive generations of the original tree produce low-tannin acorns similar to the parent. Trees tend to fruit in thick clusters on spurs. Good quality flour. -35 F.

ABOA Pot, 6-12" \$7.75 25+ 3-6" \$3.25 1-2' \$9.75

Nutty Bur Oak

Quercus macrocarpa x Ecos
Unique selected form with a distinctive flavor with little or no detectable tannins. Thick, dark green leaves. Yields are not as high as others but the acorn quality is the best. Cap completely encloses the acorn. People are pleasantly surprised when they bite into this fresh from the tree. -30 F.

NBOA Pot, 6-12" \$7.75 25+ \$3.25

Burgambel Oak

Quercus macrocarpa x gambelli Ecos
Excellent Acorn Production On a Small Tree
Best selection for acorn production on young trees; often produce when trees reach 4-6' tall. Bur oak-like acorns usually have a very low tannin content. Trees have a compact, bushy crown. Our Ecos selections are from trees that fruited in 4 years from seed. Hardy to -35 F.

BUGA Pot, 4-12" \$7.75 25+ \$3.25 1-2' \$9.75



Burgambel Oak Acorns



Ashworth Bur Oak



Nutty Bur Oak



Schubur Oak Acorns



'Sweet It Is' Bebb's Oak

Schuettes Oak

Quercus x schuettei Ecos
Swamp white oak seedlings selected from over 3,000 trees. Our orchard trees of this cross are most like swamp white, producing sweet, low-tannin acorns that rarely contain oak weevil larvae. Maintains a symmetrical upright growth. Trees begin bearing in 4-6 years. Acorns drop free of the cap and make a good-quality flour. Height 70 ft. Hardy to -30 F.

SCHU Pot, 6-12" \$7.75 25+ \$3.25 1-2' \$9.75

Schubur Oak

Quercus x schuettei x macrocarpa Ecos
Most Productive of the Schuettes
Schuettes oak types producing over 40 pounds of acorns on a 3-inch diameter tree. The branches support dense clusters of acorns, causing them to bend from the weight. Selected from indigenous Michigan trees which began fruiting in 4-8 years from seedling. Lower tannin than most. Height 60 ft. Hardy to -30 F.

SCHB Pot, 6-12" \$7.75 25+ \$3.25 1-2' \$9.75

Bebbs Oak

Quercus x bebbiana (macrocarpa x alba) Ecos
White Oak with a Fast Growth Rate
One of the best hybrids for growth rate and acorn production, Bebb's oak provides low-tannin acorns and a symmetrical branching habit. Its ability to adapt to all soil types helps with acorn production and growth rate. Our seed trees were selected as the most vigorous out of hundreds of seedlings. Height 60 ft. -30 F.

BEOA Pot, 6-12" \$7.75 25+ \$3.25 1-2' \$9.75

'Sweet It Is' Bebb's Oak

Quercus macrocarpa x alba Ecos Super Heavy Acorn Production
The branches are completely covered with acorns on this unique cross found and created in Michigan. They ripen in early September. Sweet acorns with almost no tannin can be processed easily. Trees are compact, growing to 30-40 ft. -30 F.

BEOA-SW Pot, 6-12" \$7.75 25+ \$3.25 1-2' \$9.75



Schuettes Oak



Schuettes Acorns



'Sweet It Is' Bebb's Acorns



Bebbs Oak Acorns



Bebbs Oak Acorns

OAKS

Chestnutleaf Oak

Quercus castanaefolia Ecos

Fastest Growth of All Species Oaks—Great Acorn Production

Our Ecos strain originated from acorns produced from arboretum collections, using the most vigorous trees from our planting 25 years ago. Some grew 6 ft. tall in 2 years. The most productive oak at our farm, yielding over 50 lbs. per tree on 20-year trees. Possibly our trees are hybridized with sawtooth or turkey oak. Very tall, straight growth habit with symmetrical branching. Height to 100 feet. Hardy to -25 F.

CLOA Pot, 2-3' **\$12.75**

Bundle of 25, FG, 6-12" **\$31.25** (\$1.25 each)

Bundle of 25, FG, 12-18" **\$43.75** (\$1.75 each)

Bimundors Oak

Quercus x bimundorum Ecos

Heaviest Acorn-Producing Oak

White and English oak crosses have the highest yields of acorns per tree, from 25-75 lbs. on trees 15 to 20 years old. Production begins in 6-10 years. Easy to transplant with fibrous roots. Medium growth rate. Height 50 ft. -30 F.

BIOA Pot, 3-6" **\$7.75** FG, 18-24" **\$9.75**

FG, 2-3' **\$11.75** FG, 3-4' **\$15.75**

Turkey Oak

Quercus cerris

Pennsylvania Strain—Vigorous-Growing Species Oak with Large Acorns

Fast-growing oak tolerant to alkaline, clay and extremely dry soils. Growth rate averages 2-3' per year. Trees begin bearing in 8-12 years. Glossy foliage—leaves remain on until December. Nice dense round crown. Once producing the trees produce a lot of acorns almost every year. No winter damage yet at -25 F. **TUOA-P** FG, 3-5' **\$14.75**



Chestnutleaf Oak Acorns



Bimundors Oak



Turkey Oak Acorns

Columnar Oak

Quercus x Ecos

Upright Selections—Dense Growth Habit
Clean Foliage—Good Acorn Production

Hybrids from select parent trees with good acorn production as well as resistance to mildew—a common problem with English oaks which weakens and kills them. As part of a hedgerow these trees would contribute acorns and not create dense shade if mixed with other plants. Height 45 ft. Hardy to -25 F.

COOA Pot, 6-12" **\$7.75** 25+ **\$4.25**

12-18" **\$9.75** 25+ **\$4.75**

Burenglish Oak

Quercus macrocarpa x robur (mcdanielli) Ecos

Fast-Growing Hybrid Oak—Good Acorn Production

Hybrids are grown from seed from a grafted parent. Transplants well in a wide variety of soils and climates. Growth rate averages 2-4 ft. per year. Acorn production begins between 5-10 years of age. Yields are usually high with this strain. Symmetrical crown forms into a dense, round or oval shape. Leaves are large and clean of foliar diseases. Height 70 ft. Hardy to -30 F.

BUEN Pot, 6-12" **\$7.75** 25+ **\$4.25** 12-18" **\$9.75**

Northern Live Oak

Quercus x asmusiana Ecos

Thick Semi Evergreen Leaves—Semi-Dwarf Durable Oak—Fruits on a Small Tree

Seedling selections of garry and shrub live oak hybrids. After 25 years parent trees average 6-15' tall with equal width. All have thick, leathery leaves that stay green until December. Small acorns produced on a compact tree. Hardy to -20 F.

NLOA Pot, 4-8" **\$7.75** 25+ **\$3.75**



Burenglish Oak



Columnar Oak



Northern Live Oak



Columnar Oak

WALNUTS

Walnut Leaf Pattern

English Walnut *Juglans regia* Russian Strain—Thin-Shelled, Cold-Hardy Selection

Widespread tree found in Europe, China and India growing in mixed forests on mountain slopes. Our strain originated in Michigan, created by seed nuts selected near Moscow. Leaves out later than Carpathian Walnuts thereby missing late frosts. Dense, round crown to 40 ft. Plant two for pollination. -20 F Hardiness.

ENWA Pot, 6-12" \$11.75 25+ 6.25 each
2-3' \$14.75



Heartnut Form

Buartblack Walnut

Juglans x bixbyi x nigra Ecos
Vigorous Walnut Cross with
the Highest Nut Yields

This rare seedling was found in a bed of buartnuts that crossed with black walnut. The tree produces copious nuts with a mild butternut flavor. Nuts on are born in clusters all along the branches. Seedlings are very vigorous, often producing a 3-5' plant in one year. Height 50 ft. Hardy to -30 F.

BUWA Pot, 18-24" \$13.75

Heartnut *Juglans cordiformis Ecos*

Mild Cashew-Butter Flavored
Nuts Crack Out Easily—An
Easy Walnut to Grow for Nuts

Clusters of up to 10 nuts are produced in profusion on a broad, spreading tree. Because the nuts contain no internal shell, they crack easier with less shattering. Our Ecos selection is based on a Iowa variety that produces true heart shaped nuts. Two for pollination. Height 40 ft. Hardy to -25 F. **HEAR** Pot, 18-24" \$13.75



Buartblack Walnut



Heartnuts

NOTE: FG = field-grown bare root plants
Pot = grown in paper pots

Black Walnut *Juglans nigra Ecos*

Selected Strain for Timber and Nut
Production

We planted our seed orchard over 25 years ago by selecting seedlings grown from many varieties including Sparks, Sparrow, Bowser and Abraham. The goal was to use a mix of genetic types that combine fast straight growth and good nut production. Very good seed strain for both. Height 80 ft. Hardy to -30 F. **BLWA-E** FG, 3-4' \$12.75 25+ \$6.75



Ecos Black Walnut

Butternut *Juglans cinerea*

Fast-Growing Walnut—Heavy Producing Eager
Strain from Central Michigan

The white walnut is known for its attractive light-colored wood and delicious buttery flavored nuts. Rarely will you find butternuts in any quantity so it is fortunate to find seeds of this 80 year old wild tree. 4-8 years to fruit. Height 50 ft. Hardy to -35 F. **BUTT** Pot, 18-24" \$13.75



Butternut

PECANS



Michigan Pecan *Carya illinoensis Ecos*

The Most Northern Pecan Strain—Short-
Season Trees Ripen Nuts in Early October

Created by using wild tree germplasm from Illinois, Minnesota and Iowa. We planted the most vigorous trees with no winter damage. No insect or disease problems. Takes 10 to 15 years to fruit. Can grow in sand, clay, wet or dry soil. Full sun. Height to 60 ft. Hardy to -30 F.

MIPE Pot, 6-12" \$9.75 12-18" \$12.75 18-24" \$14.75
6-12" 25+ \$5.25



Michigan Pecan Fall Color

Southern Pecan *Carya illinoensis 'Sacred Forest'*

Improved Southern Strain with Large Nuts
and Prolific Production

Wild-selected strain developed in Florida's panhandle. Seeds were selected based on size from Elliot types in the 1950's. As time went on trees were selected based on yield, lack of wind damage and reliable nut production. Best in Zones 7-10. Height to 90 ft. Hardy to -15 F.

SOPE-SF Pot, 6-12" \$7.75 1-2' \$9.75 6-12" 25+ \$4.75



Michigan Pecan Nuts

HICKORIES

Shellbark Hickory Iowa *Carya laciniosa Iowa*

The King Nut Hickory—Easiest Hickory to Grow—Fast Growth—Largest Nut

The largest nuts in the genus *Carya*, often reaching over two inches across. Rapid growth rate and easy to transplant, trees can grow in a variety of soils, up to 2-3 ft. per year. Symmetrical, dense round crown. Fruits in 20 years. Height 60 feet. -30 F. **SHEL-IA** Pot, 18-24" **\$12.75**

Shellbark Hickory Ecos *Carya laciniosa Ecos*

Heavy Producers of Nuts, from Mixed Selections on Our Farm

Our Ecos shellbarks are the best for use in hickory nut production. We created this strain 30 years ago using a broad mix of hybrids and species like Stephens and Abundance. The results were trees producing a fantastic mix of every size and shape of nut on young trees (15 yrs.) Height 80 ft. -30 F. **SHEL-E** Pot, 6-12" **\$8.75** 12-18" **\$10.75**

Shagbark Hickory *Carya ovata Pennsylvania*

Best-known Hickory—Delicious Nuts—Shaggy Bark—Incredibly Hard Wood Distributed from Quebec to Mexico, this universal *Carya* is known for its wood and delicious smoky-flavored nuts. Hard to transplant large, smaller trees regenerate their taproot faster. Best in heavy loam soil. Height 80 ft. -30 F. **SHAG** FG, 12-18" **\$9.75**

Shagbark Hickory 'Well' Strain *Carya ovata*

Long Pecan-Shaped Nut—Vigorous Seedlings Discovered as a chance roadside seedling in SW Michigan not far from our farm. Very unique seedling strain useful for nut production. Well is a very old tree with a 2-foot diameter trunk and shaggy bark. Use these potted trees for better transplant success. Height 80 ft. Hardy to -30 F. **SHAG-WE** Pot, 6-12" **\$9.75**



Shellbark Hickory



Shagbark Hickory



Shellbark Hickory Nuts

HICKORY HYBRIDS

Lecont Hican *Carya illinoensis x aquatica*

Fast-Growing Pecan and Hickory Hybrid Used for Lumber

Natural hybrid found in the southern part of the U.S. where pecan and water hickory overlap. This is by far the fastest-growing hickory we have grown, averaging 3-4 ft. in one year. Used for cabinetry and flooring. Oil was once extracted from its nuts for use as a hair ointment. Height to 90 ft. Hardiness -30 F.

LEHI Pot, 2-4' **\$14.75** 6-12" **\$7.75**
6-12" 25+ **\$3.75**

Shagshellbark Hickory Ecos

Carya x ovata x laciniosa

High-Yielding Hickory Hybrid

Originally from Iowa, this cross produces massive quantities of nuts on a compact tree. Although thick-shelled, these natural hybrids fruit on younger trees, when they reach about 15 feet tall. Trees are easy to transplant and tolerate drought well with clean crisp foliage even in the heat. Nuts have a flavor like shagbark hickory. Height 50 ft. Hardy to -30 F.

SSHI Pot, 6-12" **\$9.75**

Shagbitternut Hickory Ecos

Carya ovata x cordiformis

High-Yielding Hickory

One of the most productive young trees in our planting, it began fruiting when only 10' tall. This seed was given to me from Wisconsin many years ago, as a gift for other seeds I had sent. I planted it on a hill denuded of its trees (replaced by alfalfa). Now it shades the alfalfa and the alfalfa fertilizes the tree. Height 40 ft. Hardy to -30 F.

SBHI Pot, 6-12" **\$8.75**

Sweet Pignut Hickory *Carya ovalis*

Sweet-Tasting Hickory Nut

Widely distributed from the northeast to Nebraska, in all types of soils from sand to clay. Trees develop a broad, rounded crown with a height to 80 ft. and a trunk diameter up to 2 ft. Seedlings are vigorous growing and fairly easy to transplant. Nuts have a sweet oily flavor. True-to-type seed source from Pennsylvania. Hardy to -30 F.

SPHI FG, 18-24" **\$11.75**
2-3' **\$13.75** 3-4' **\$15.75**



Lecont Hican Nuts



Hybrid Hickory Tree



Hybrid Hickory Nuts



Sweet Pignut Hickory Nuts

TERMS & INFO

Oikos Tree Crops Plant Guarantee

We guarantee our nursery stock to be healthy and true to catalog description which includes grade and count. Due to natural variation, not all plants respond the same and may be different in your climate. If there is a question concerning plant quality, please bring this to our attention within two days of receipt. We will not cover losses due to experimentation, neglect, heat, drought, cold and other extreme environmental conditions that have proved fatal in your location. We do not take responsibility for plants past their 90 day guarantee. Our goal is to help you get started and off on the right foot while providing realistic accurate information under average growing conditions. Once shipped, nursery stock cannot be returned without our permission. We do not refund the shipping costs.

90 Day Growing Season Guarantee: We offer a 90 day growing season guarantee for plants. Please make a claim by August 15 of the first growing season. This guarantee is for the first growing season of 90 days from when you received the plants. If you have ordered in the fall, this will be effective the following growing season until August 15. Replacements are sent only in the fall after the plants are dormant. A \$12.00 shipping charge must be paid prior to the replacements being sent. We only inquire about your planting techniques to prevent the same problem from arising again. Replacements do not receive additional replacements.

We appreciate any comments concerning our nursery stock to better improve our service.



Field-Grown Plants



Seedlings in Paper Pots



Planting Persimmons With the Next Generation During a Workshop

Catalog Design by "Wild" PJ Chmiel - Lawton, MI

| Code | Qty. | Size | Description | Price Each | Total |
|------|------|------|-------------|------------|-------|
| 13 | | | | | |
| 14 | | | | | |
| 15 | | | | | |
| 16 | | | | | |
| 17 | | | | | |
| 18 | | | | | |
| 19 | | | | | |
| 20 | | | | | |
| 21 | | | | | |
| 22 | | | | | |
| 23 | | | | | |
| 24 | | | | | |
| 25 | | | | | |
| 26 | | | | | |
| 27 | | | | | |
| 28 | | | | | |
| 29 | | | | | |
| 30 | | | | | |
| 31 | | | | | |

Office Use



Oikos Tree Crops, LLC
P.O. Box 19425
Kalamazoo, MI 49019
 Tel: **269-624-6233**
 Fax: **269-624-4019**
 Web: **oikostreecrops.com**
 Email: **customerservice@oikostreecrops.com**

Method of Payment:

- Check or Money Order Enclosed
- VISA MASTER CARD DISCOVER AMERICAN EXPRESS PAY PAL

Expiration Date: _____ Security Code (S.E.C)
 (3 digits on back of card): _____

Account Number: _____

Signature: _____

Ship to:

Mailing address: *Fill out only if different from shipping address*

Daytime Phone: () -

Email: For shipping notification and tracking, plus order status. A must if you pay by PayPal.

YES I want to receive the OIKOS email newsletter to learn about sales and new items!

Ship via: UPS US Post Office Pick-up (We will send a map with confirmation.)
 (Most orders go UPS or USPS ground unless indicated. See order information for AIR.)

Best shipping date:
 Or we will pick the best time for your area.

| Code | Qty. | Size | Description | Price Each | Total | Office Use |
|-------------|------|------|--|------------|-------|------------|
| 1 | | | | | | |
| 2 | | | | | | |
| 3 | | | | | | |
| 4 | | | | | | |
| 5 | | | | | | |
| 6 | | | | | | |
| 7 | | | | | | |
| 8 | | | | | | |
| 9 | | | | | | |
| 10 | | | | | | |
| 11 | | | | | | |
| 12 | | | Need more space? Order form continues on Reverse | | | |
| GIFT | | | GIFT CERTIFICATE | | | |

Name on Gift Card _____

NOTE: Catalog Codes are four letters. (Ex.: Pawpaw = PAPA).

Page 1 Sub Total

Page 2 Sub Total

Pages 1 + 2 Total

Minimum Ship Cost: \$17.00
 (unless ordering seeds only, via USPS)

Minimum Order: \$25.00

Michigan Residents Add 6% Sales Tax

SHIPPING RATES:

\$25.00 – \$50.00 (**\$17.00**) \$75.01 – \$100.00 (**\$21.00**) Over \$200.00 (**20% of Subtotal**)
 \$50.01 – \$75.00 (**\$19.00**) \$100.01 – \$200.00 (**\$24.00**)

Shipping and handling:

End Total:



Early Morning Work on the Farm



Deer Caught on Wildlife Camera at Our Farm



Propagation by Seed

| | | | | | |
|----|--|--|--|--|--|
| 32 | | | | | |
| 33 | | | | | |

NOTE: Catalog Codes are four letters.
(Ex.: Pawpaw = PAPA).

Web Orders: www.oikostreecrops.com

Our web site contains many plants and specials that are not listed in the catalog. Use the search button for common or scientific names. You can add them to this paper order form. Please add the code number.

Mail Orders: Use this order form. Pay by check, money order or credit card.

Payment by PayPal: For direct deposit and for international orders. We will email you a link with the invoice total. Once payment is confirmed we will ship your trees.

Time of Shipping: Request a certain ship date. Due to weather conditions, some delays may occur. A ship date is an estimate when the plants will leave our premises.

Postal Air Shipments and Alaska: Cost varies on size and weight of box. Alaska orders are packed first then billed and shipped Postal Air. All international orders are shipped Postal Air.

DID YOU KNOW: We are on Facebook, Flickr and Youtube. Just go to those sites and search for "Oikos Tree Crops" and you'll be the first to know when we have exciting new products or offers to share!

Order Cancellation:

Should you decide to cancel your order, please call 10 days in advance of your ship date. Since your order is highly individual we can't pass it on to the next customer or restock plants that have been dug in our fields.

Shipping Seasons:

Spring – Early March through early May. For field and potted trees. **Fall** – Early October through early December. For field and potted trees. **All Year:** Container trees can be shipped year round including December thru February and the summer months. Limited shipping in July and August due to heat and other factors. Your complete order is shipped at one time. We do not divide or split it into field and pots.

Pricing and Availability:

Oikos Tree Crops is not a wholesale company or a buy and sell type of retailer but you can purchase plants both individually or if available 25 or more. The 25 or more price is available for plants of the same species or type and the same size or year. It means we have sufficient inventory to offer it at a discounted price like a wholesale company. We do not split the 25 price nor can we mix it with other types. The 25 prices can come and go depending on crop yield and demand. We do not reserve or hold plants for future shipments. First shipped is first served. Our most up to date inventory is on the web at oikostreecrops.com.

Plant Restrictions:

For plant restrictions to your state go to the National Plant Board Website and find your states current list of prohibited plants. Due to the nature of plants and their pests we keep current using this website and help from our Department of Agriculture. Almost all plants are grown here at Oikos Tree Crops and most from seed minimizing the risk of outside contamination from another nursery.

Methods for Production of Plants by Oikos Tree Crops:

Oikos Tree Crops does not use any "synthetic" chemicals in its production of plants using almost all OMRI approved controls. Our soil mixes for our container plants uses a mix of organic fertilizers and minerals. Plants are fertilized with all organic fertilizers both dry and liquid. We are big fans of the Neem tree and frequently use Neem oil as the major deterrent for pests in our hoop houses including using it as a dormant spray prior to shipping in the spring. "Safety first" is our motto.

Need Help? Contact us at customerservice@oikostreecrops.com

You can also write to: P.O. Box 19425 Kalamazoo, MI 49019
Call us at: (269) 624-6233 or fax us at: (269) 624-4019

Page 2 Sub Total:

Name and address of someone you would like to receive this catalog



Oikos Tree Crops, LLC
P.O. Box 19425
Kalamazoo, Michigan 49019-0425
Tel: 269-624-6233 Fax: 269-624-4019
Email: customerservice@oikostreecrops.com
Web: www.oikostreecrops.com



Wild Apples

CHESTNUTS

Ken's Select American Hybrid Chestnut *Castanea x dentata Ecos*
 Close Resemblance to the American Chestnut—Vigorous Seedlings
 Highest percentage of American-type characteristics with a straight growth habit and smaller nuts. Nuts are produced in 8-12 years. Not as resistant to chestnut blight. Height 80 ft. -30 F.
KSAH Pot, 8-18" **\$13.75 each**

Timburr Chestnut *Castanea x hybrid Ecos*
 Tall, Straight Timber Growth Habit with Good Nut Production
 This American-like hybrid cross produces vigorous seedlings with a dominant central leader. Seedlings show high heritability of upright growth with good blight resistance within the majority of the seedlings. Height 60-80 ft. -25 F. **TICH** 6-12" Pot/FG **\$7.50** 1-2' FG **\$9.00**

Pyramidal American Hybrid Chestnut *Castanea x dentata Ecos*
 Symmetrical Crown—Straight Growth Habit
 Seedlings from this group show high heritability producing a compact narrow crown. This is a good blight-resistant selection for possible timber growth as well as nut production. Parent trees are 30-45 ft. tall with a 12 ft. width. -25 F Hardiness. **PAHC** Pot, 12-18" **\$11.75**



Ken's Select Chestnut



Timburr Chestnut



Pyramidal Hybrid Chestnut

Viva American Hybrid Chestnut
Castanea dentata X mollissima Ecos
 Fast-Growing Hybrid Cross—Straight Growth Habit

Viva is the largest hybrid chestnut tree on our farm with a trunk diameter of over 30 inches at the base, with a height of 70 ft. from a spry 25 year old tree. Good blight resistance. Drops nuts starting in August. Hardy to -25 F. **VAHC** Pot, 12-18" **\$11.75**

Paragon Hybrid Chestnut

Castanea x hybrid complex Ecos
 Heirloom Strain From One of the First American Crosses—Early 1900's
 Combines many attributes of the American, Chinese and Euro-pean. Straight-as-an-arrow trunk with thick, large leaves. Heavy nut production. Height and width to 60 feet. Hardy to -20 F.

PHCH Pot, 8-18" **\$15.75**

American Hybrid Chestnut Ecos

Castanea dentata x mollissima Ecos
 Diverse Hybrid Progeny—Resistant to Chestnut Blight—Sweet-Tasting Nuts
 Developed by using the maximum diverse varieties found within the cold hardy Douglass hybrids from upstate New York. Always productive. Height 60 ft. Hardy to -30 F. **AHCH** FG, 1-2' **\$11.75**

Chinese Chestnut *Castanea mollissima*
 Reliable and Adaptable Species—
 Chestnut Blight Immune and Productive
 One of the best species to grow for nut production due to its blight immunity and productivity. Grown from seeds produced in Michigan from a very nice selection with large nuts. Height to 40 ft. Hardy to -20 F.
CHCH Pot, 1-2' **\$9.75** FG, 2-3' **\$14.75**

Chinese Hybrid Chestnut

Castanea dentata X mollissima Ecos
 Dense Clusters of Nuts—Semi-Dwarf Tree
 Full clusters of small, sweet nuts produced on a completely blight-immune tree. Best selection at our farm for nut production. Trees produce quickly—3-5 years from seedling. Round crown with wide spreading branches to 25 ft. Hardy to -25 F.

CHYC 6-12" FG, **\$7.75** 25 or more **\$4.25 each**
 18-24" FG, **\$11.75**



American Hybrid Chestnut



Timburr Chestnuts



Chinese Chestnut Leaves



Chestnut Flowers

CHESTNUTS

European Hybrid Chestnut

Castanea sativa x mollissima Ecos

Large, Attractive Nuts—Excellent Productivity for Orchard Use

We started using selections from these crosses because of their high yields and large nut size. Originally from British Columbia, from J.U. Gellatly in the early 1900s. Strains like this one are frequently used in commercial orchards. Height 50 ft. Hardiness to -20 F.

EHCH Pot/FG, 6-12" **\$7.75**
25 or more FG, **\$4.25 each** 2-3' FG **\$14.75**

Seguin Chestnut

Castanea seguinii Ecos
Dwarf Asian Chestnut with Sweet-Tasting Small Nuts—Consistently Productive

Seguin chestnut is a reliable fruiter with no weevil damage and complete blight immunity. The small nuts are one of the sweetest we have with a dark brown color. Fruits quick from seed in as little as 3 to 5 years. Height 40 ft. -25 F Hardiness.

SECH Pot, 6-12" **\$7.75** 2-3' FG, **\$14.75**

Dwarf Korean Chestnut

Castanea crenata Ecos

High-Yielding Chestnut—Fruits Quickly from Seed

This is one of the most prolific chestnuts on our farm which reproduces true from seed. Dense clusters of small to medium sized nuts are produced all along the branches. Original selection from a research forester from S. Korea over 60 years ago. Blight immune. Hardy to -25 F. **DKCH** 6-12" FG, **\$7.75**

Chinquapin Chestnut

Castanea pumila

Sweetest-Flavored Chestnut—

Bush-Type—Fruits in 3 Years

Small eastern U.S. species that produces one nut per bur in long dense clusters at the end of the branch. Best in full sun with hardwood mulch. Not blight-immune but fruits anyway. Height to 6 ft. -20 F Hardiness.

CQCH Pot, 3-6" **\$9.75**



European Hybrid Chestnut



Seguin Chestnut



Dwarf Korean Chestnut



Chinquapin Chestnut

See our website for add'l varieties of many plants.

FRUITING PERENNIALS

Maypop

Passiflora incarnata
Apricot Vine—Purple Passionflower

Vigorous perennial vine produces sweet, yellow, egg-shaped fruit. Made into drinks, jellies, jams cooked with lemon and sugar. In Michigan, found as a vine grown near foundations of older homes. Plant in rich soil and mulch heavy with rich compost. The distinctive flowers were eaten as a vegetable.

Hardy to -20 F. **MAYP** Pot, **\$9.75**



Maypop Flower

Blue Passion Flower

Passiflora caerulea
Passion Fruit Vine

Semi-evergreen vine from Argentina. Produces orange fruit with red edible pulp, which is added to drinks. Hot, long summer needed for fruit production. Flowers have a minty fruit aroma and are used for making a syrup. Tea from the flowers is said to relieve anxiety. Root hardy to zone 6, top freezes at 10 F. Roots regenerate the top in colder climates.

Height 30 ft. Hardy to -15 F. **BPFL** Pot, **\$9.75**



Blue Passion Flower

Blue Bean

Decaisnea fargesii
Perennial Fruiting Plant with Sweet-Tasting Pulp

Wu-yueh-kua-teng. You peel it like a bean, eating the flesh around the seeds. 'Sweet but insipid'—the flavor is considered 'mellow' by most. Fruits on 1 year canes once the root is established. Hardy NY seed strain. Seedlings grow fast after transplanting. Self-fertile. Height 8 ft. Hardy to -20 F.

BLBE Pot, **\$5.75**



Blue Bean

Rhubarb

Glaskins Perpetual Rhubarb

Rheum rhabarbarum
Productive heirloom strain from the U.K. has been one of the best seed-grown varieties, making it possible to harvest a few stems the first year. Tender red stalks start early and continue producing long into the season. Hardy to -35 F.

GPRH Pot, **\$5.75** **GPRH-S** 50 seed packet **\$3.75**



Glaskins Rhubarb

Paragon Rhubarb

Rheum rhabarbarum Bright Red Stalks
From the 1800's, this variety produces tart red stalks early in the season in quick succession. Slower to get established but like all rhubarb, a long-lived perennial. Can be reproduced true from seed. Originated in England.

PARH Pot, **\$5.75**



Paragon Rhubarb



GRASSES

Pete Gammagrass *Tripsacum dactyloides* Ecos
 Vigorous, Drought-Tolerant Prairie Forage
 Penetrates clay pan soils up to 7' deep. Grows luxuriantly even under the most drought conditions. Provides high-quality hay with 12% protein, up to 6 tons/acre. 'Pete' represents open-pollinated selections from roadside and prairie sources in its northern range, selected during drought years, showing no water stress. Soil Ph 4.5-6.5 sandy loam or clay. Stays green late. Very vigorous. Height to 8 ft. -25 F.
PEGA Pot, \$3.75 25+ \$2.75



Pete Gammagrass



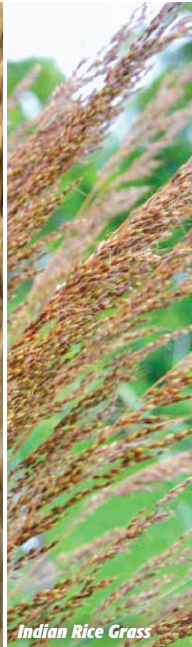
Bighead Beachgrass

Bighead Beachgrass *Ammophila breviligulata* Ecos
 Extreme Durability, Excellent Soil-Holding
 Prolific Seed Production
 Large seed heads up to 24" long—about twice that of the normal species. Plants form a thick clump with broad, upright leaves. Rhizome grass used for thatching. Highly wind and drought resistant due to the silica on the outside of the leaves. Dune not necessary. Height 6 ft. Hardy to -30 F.
BBGR Pot, \$3.75 25+ \$2.75

Perennial Wheat *Triticum x*
 Perennial Version of Wheat
 Created by Peters Seed Company. We grew out many of these interesting wheat and rye crosses and put them in a mixed planting with Oahe Intermediate wheat grass. The result was a 2nd generation of plants that are longer-lived (up to 7 years and counting) and mostly free of rust and smut. Tiny berries, but it's a step towards a perennial wheat. Very nice quick green up in spring with large blades up to 2' tall. May be useful as a forage grass. Seed heads vary from 6-18" long. -25 F.
PEWH Pot, \$5.75



Perennial Wheat



Indian Rice Grass

'Tall One' Indian Rice Grass *Oryzopsis hymenoides* Ecos
 Northern Strain of Native Prairie Grass
 Used for its nutritious seeds, which were roasted and combined with corn meal or made straight into flour. One of the most widely-dispersed prairie grasses. From a seed source collected in northern Wisconsin from large vigorous plants up to 7 ft. tall. Can grow anywhere. Hardy to -35 F.
TOIR Pot, \$5.75

Amur Silvergrass *Miscanthus sacchariflorus* Russian Strain
 Tall, Upright-Growing Grass to 8 ft.
 Can be used for screening—slowing wind speed and create a thick, bunch-type sod. Beginning to be used for bio-fuels. One of the best fiber grasses with greater stem density than other grasses. Has not spread by seeds here but does have strong rhizomes. Multi-seeded in pots. Hardy to -35 F.
AMSI Pot, \$3.75 25+ \$2.75



Amur Silvergrass

Giant Miscanthus *Miscanthus floridus*
 Tallest of the Grass Species at Our Farm
 Growing up to 15' tall. Frequently used for biofuel research due to its immense yields (about 2-4 times that of switchgrass). Does not flower or set seed at our location, or we possibly have a selection that takes a longer season to flower. Great screen plant and bamboo-like in its growth. Rhizomes spread about 6 inches per year. Hardy to -20 F.
GIMI FG, Root cutting \$8.75

Edible Bamboo *Phyllostachys*
 Species for Bamboo Shoot Production
 This timber-type bamboo is used frequently for its edible shoots. Unlike most species of bamboo this selection is the preferred species used for cutting sprouts in early spring. Grown from roots, often cultivated using a 6-mil weed barrier to prevent its STRONG rhizome nature. Further details on the Bamboo Society website. Hardy to 0F and not much more. Not hardy enough in Michigan to produce large canes. Height 30-60', may vary by location. Grown from cuttings.
EDBA Pot, \$14.75



Pete Gammagrass

Northwind Switchgrass *Panicum virgatum*
 Vigorous Selection—Northern Prairie
 Bluish-green foliage with dancing seed heads and yellow fall color make this a popular ornamental. Vigorous selections are being tested for bio-fuel. One of the most forgiving and competitive grasses in a variety of soil types. Produces a thick clump. Grown from cuttings. Height 6'. Hardy to -30 F.
NOSW Pot, \$7.75



Switchgrass

Wild Oats

Wild Oats *Chasmanthium latifolium*
 Heavy Seed Producer—Ornamental Grass
 Produces ornamental seed heads that were once harvested and made into mush. The seeds do taste like oats but it requires a good food mill to get the nutritional benefits as the seed is encased in a fibrous husk. For sowing your wild oats, plant in full sun or light shade. Grows in a variety of soils. Height 3 ft. Hardy to -30 F.
WIOA Pot, \$4.75 25+ \$2.75

LAWN / GROUND COVER

Equidistance Horsetail *Equisetum scirpoides*
Evergreen Groundcover—Dense, Dwarf, Impervious to Foot Traffic
Creates a dense mat of rhizomes, helping exclude other grasses. Straight stalk to 8 inches high with no side branching. Very easy to grow in a wide variety of soils including wet soggy soil, sun or light shade. It remains evergreen throughout the winter. Young shoots or strobili can be eaten but care should be taken for people with edema. -25 F.

EQHO Pot, \$6.75



Equidistance Horsetail

Rooftop Sedum *Sedum*
Roof or Ground—Makes a Dense Sod

This species is low enough to walk on, provides flowers, and won't overwhelm the grass portion of your lawn. Can grow in light shade and grow where grass is difficult to establish, especially in shallow soil. Found growing on a rock strewn peninsula of Lake Huron. Bright yellow flowers. Height runs from 2-3 inches tall depending on the soil type. -25 F.

ROSE Pot, \$3.75 25+ \$2.75



Rooftop Sedum

English Lawn Daisy *Bellis perennis*

Lawn Integration—Flowering Yard—Edible Flowers—Mowable
Planted with grass, lawn daisy helps create a low maintenance lawn, low enough to walk on and which provides edible flowers. The whole flower is edible and the leaves can be used as a pot herb. Stays green year round. Can grow in light shade and in poor soils. Multi-seeded in pots. Space 3 feet apart. Height from 2-5 inches. Hardy to -25 F.

ELDA Pot, \$4.75 25+ \$2.75



English Lawn Daisy



SOILICIOUS

INGREDIENTS: Seaweed, Alfalfa, Coir, Peat, Charred Composted Pine Bark, Spanish Carbonitite, Greensand, Gypsum, Humates, Biopaks.

SOILICIOUS Plants Say It Tastes Delicious
Rich in Minerals, Beneficial Bacteria and Fungi

Directions: Use 1/2 to 1 cup / plant, applying directly to the roots.

Suggestion: Mix Soilicious with equal parts compost or cow manure and mix with soil before planting.

Soilicious is a highly-concentrated mineral-biological mix meant to help plants establish in a new location. The biological component helps the plant regenerate roots quickly while the mineral component makes the plants more resistant to stress—increasing/balancing growth rate. No need for additional fertilizers the first year.

SOIL-.5 .5 Cubic ft. bag \$15.75 (About 75 cups)

EDIBLE FLOWERS

Mountain Daylily *Hemerocallis middendorffii*
Edible Daylily—Nikko-kisuge

Found high in mountain meadows in Japan and Siberia, the flowers have a fruity fragrance and are cooked as a vegetable or added fresh to salads. Mild floral sweet flavor. Original seed was collected wild in Japan. Earliest of all flowering daylilies in late June. Collect the buds in full color or the day of opening. Height 2 ft. Hardy to -35 F.

MODA Pot, \$9.75



Mountain Daylily

'Sweet Flava Flavor' Daylily *Hemerocallis Ecos*
Sweet—Floral—Delicious Fresh

Selected from seedlings of a tall large daylily, Flava (grown by root cuttings) is a selection specifically grown for its edible flowers. The lightly-scented sweet flowers melt in your mouth. Enjoyed by all who have eaten them. The yields are 3-4 times that of Nikko-kisuge plus the flowers are twice the size. 3-week season. Height 4-5 ft. Hardy to -30 F.

SFFD Root, FG \$17.75



'Sweet Flava' Daylily

Hibiscus *Hibiscus moscheutos, laevis*
Edible Bright Pink and White Flowers

Seed collected from a dry site, this wetland species has furry leaves and is more drought tolerant than the species. The flowers have a mucilaginous texture and are normally used more as a garnish. Hardy to -30 F.

HIBI Pot, \$5.75



Hibiscus

Redbud *Cercis canadensis* Legume—Edible Pea Flowers, Pods
Flowers can be harvested and added to salads or as a garnish. The mild flavor is similar to a snow pea. Said to have the same healthy bioflavonoids and anti-oxidants as red wine. Young pods can be harvested before they become too fibrous. We offer two types, both Selected from Alba:

Dwarf: We found 6 seedlings that began flowering when 2 ft. tall. This selection is much more compact than the species making it more floriferous. Height 8 ft. Hardy to -20 F.

DWRE Pot, 6-12" \$7.75

Forest: This plant reached 40 ft. in 15 years. Vigorous seedlings producing a purplish lavender-colored flower. Pods are larger than most. Height 50 ft. Hardy to -20 F.

FORE Pot, 6-12" \$7.75



Redbud Flowers

ASPARAGUS

Heirloom—Open-Pollinated

'Very Wild' Asparagus *Asparagus officinalis* *Ecos*
Hunting the Wild Asparagus—Cultivate It Yourself
Naturalized or wild selection of asparagii from the most vigorous and long-lived plants growing on our farm untended. Our seed plants have been here for 30+ years and are still productive. Stronger flavor than most named selections. Space 1' apart in rows 3' apart. -30 F. Multi-seeded in pots. **VWAS** Pot, \$3.25 25+ \$2.25

Precoce d'Argenteuil *Asparagus officinalis*
Purple Dutch French Heirloom—First Used for Blanching in the 1700s
Early-ripening thick rose pink spears. Vigorous seedlings, well adapted in Michigan. One of the first selections of 'modern' asparagus. Tender, mild flavor. Multi-seeded in pots. -20 F. **PDAS** Pot, \$3.25 25+ \$2.25

Conrovers Colossal *A. officinalis* Vigorous Heirloom Selection
This UK variety from the 1800's is known for flavor, heavy yields and ease of cultivation. Grows quickly, allowing for harvest in 2nd year. Dark green foliage. Like other heirlooms you can let it seed and replant its seedlings. Hard to find this seed. -20 F. **CCAS** Pot, \$3.25 25+ \$2.25

Species Asparagus

Kiji-Kakushi *Asparagus schoberioides* Wild Japanese/Russian Species
Collected for its small, dark-green spears in the early spring. Not much cultivated for food elsewhere but is used as an ornamental because of its dense wire- and fern-like foliage. Hardy to -20 F. **KIKA** Pot, \$7.75

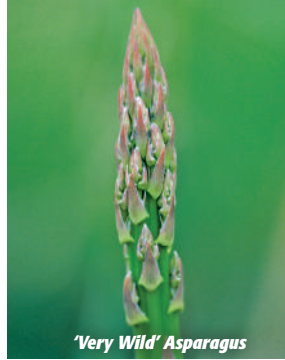
Vine Asparagus *Asparagus verticillatus*
Tall vine or spreading asparagus reaches up to 8' tall. Young shoots are collected in the spring and cooked. Has not been cultivated to any extent but eaten in Russia and western Asia. Slow-growing at first until the rootstock is established. -25 F hardiness. **VIAS** Pot, \$7.75

F-1 Male Hybrids

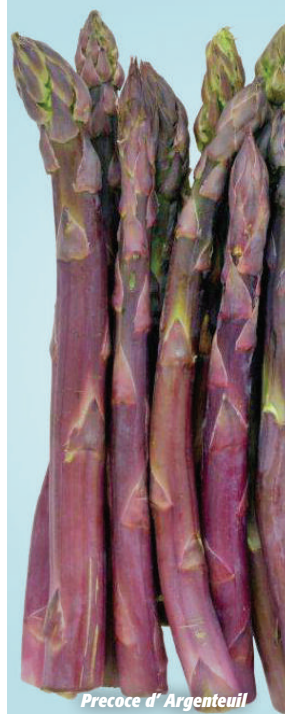
Atlas Dark green-purple spears produced very early in the season. Due to its hybrid vigor, plants also produce late into the season with thick, tight-headed spears even in hot temperatures. Excellent disease tolerance. Commercial selection. Hardy to -20 F. **ATAS** Pot, \$5.75

Gijnlim 100% male hybrid suited for cultivation of both white and green asparagus. An exceptionally early grower with very high productivity. Does well on sandy or clay soils. Spear thickness remains good even when the season is advanced. Hardy to -20 F. **GIAS** Pot, \$5.75

Mondeo Male variety from Germany, adaptable to production as both green/white asparagus on a range of soil types. High yields, emerges early. Independent flavor analysis: more intense (scoring 4/5 on intensity). When cooked, Mondeo still preferred. -20 F. **MOAS** Pot, \$5.75



'Very Wild' Asparagus



Precoce d' Argenteuil



Asparagus Fall Color

CACTUS

For Fruit Production—Tuna (Do not eat skin).

Prickly Pear Cactus 'Jersey' *Opuntia compressa* NJ Seed Source
Heavy Fruit Production From a wet spot in the Pine Barrens, produces large, clean pads, few needles and lots of bright red fruit. Pads in thick clusters. Nice ornamental with clear yellow flowers. Grown from seed / pads from genetically different individuals. -20F. **PPCA-J** Pot, Rooted Plant \$7.75 **PPCA-JP** 2 Unrooted Pads \$7.75

Ecos Cactus Hardy—from Wild Seedlings w/ Good Fruit
Reddish-purple fruit can be used in jelly with a flavor resembling strawberry and watermelon. Has many of the same properties as aloe vera. High in calcium and magnesium. Scoop out the insides of the fruit and puree in a blender with water for a highly viscous gel. Mix with other juice to make a healthy drink. Do not use the skin—the glochids are a strong irritant. Full sun. Height 6", hardy to -20F. **ECCA** Pot, Rooted Plant \$7.75 **ECCA-P** 2 Unrooted Pads \$7.75

For Pad Production—Nopales

Very few glochids—easy to clean and safe to eat. Thornless clones from pads.

Green Smoothie Few Glochids—Few if Any Thorns
A chance seedling from our Ecos types, produces large clean pads that are twice the size of many prickly pears. Possibly not quite as winter hardy as species prickly pear. -20F. **GSPP-P** 1 Unrooted Pad \$9.75

Green Cluster Clean Green Pads
From South Carolina, this selection is used specifically for Nopales. Each plant produces multiple clusters of clean thick pads. This variety is the closest you are going to get to the Texas selections which are not hardy here. -15F, possibly more. **GCPP-P** 1 Unrooted Pad \$9.75

Species Types (Not for Eating)

Plains Prickly Pear *Opuntia macrorhiza* Illinois Seed Source
Tuberous-Rooted—Large Fruit The mother of Great Plains cacti, with long spines, thick, long-lived pads and deep massive roots. Large, juicy fruit. Spreads slowly. Tallest cactus in our collection, up to 20". Grown from seeds and pads. -30F. **PPPE** Pot, Rooted \$9.75

Devils Tongue Cactus *Opuntia humifusa* MI Strain—Multiple Uses—Durable, Thorny Widely used by Native Americans as a dermatological aid and foodstuff. Juice of pads was used for rattlesnake bite, warts and wounds. Fruits were eaten fresh after removing bristles, or stewed. Very hardy, -25F. **DTCA** Pot, Rooted \$8.75

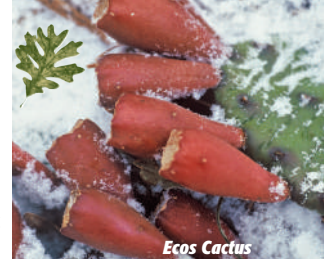
Rafine Prickly Pear *Opuntia humifusa* var. *rafinesquei* Dense Clusters of Pads—Beautiful Ornamental From Eastern U.S., a strong grower producing masses of bright yellow flowers with a red center. Roots easily, uniform growing. Makes a nice solid hedge of cacti. Fruits ripen in late fall or spring. -25F. **RPPE-P** 2 pads \$7.75



Cactus Flower



'Jersey' (L) vs. Cultivar (R)



Ecos Cactus



Plains Prickly Pear



Rafine Prickly Pear

TOMATILLO/GROUNDCHERRY

GROUNDNUTS

Tomatillo (Annual Varieties)

Aunt Molly's Groundcherry *Physalis pruinosa*
Sweet Yellow Fruit Used for Salsa, Jams, Jellies, Pies and Fresh
Best-yielding and flavored husk tomato with just the right blend of sweet and tart. Easy to grow in any soil; produces in light shade. Anyone can grow and enjoy this fruit. Keep seeded moist when germination begins. 70 days (annual).

AMGR 800 seeds per 1/2 gram packet **\$3.75**



Aunt Molly's Groundcherry

Pervian Gold Groundcherry *Physalis peruviana*
Native to high-altitude Peru, Columbia and Ecuador where they grow wild, this selection has a richer flavor and very small seeds compared to other cultivars. Has become an important crop in China. High in polyphenols and carotenoids, with anti-inflammatory and antioxidant properties. 80 days.

PGGR Packet of 150 Seeds **\$3.25**



Pervian Gold

Fruta Verde Tomatillo *Physalis ixocarpa*
Large yellow fruits 1-1.5 inches in diameter. Sweet and juicy fruits start ripening in 70 days, continuing till frost. This selection is great for eating fresh and mixing with other sweet fruit. Plants are tall, reaching 3-5 ft quickly.

FVTO Packet of 140 Seeds **\$3.75**



Fruta Verde Tomatillo

Perennial Groundcherries

Yellow Groundcherry *Physalis longifolia subglabrata*
Michigan—Husk Tomato—Sweet Yellow Fruit
Prairie species used at one time as a kind of perennial tomato kept alive at the edges of corn fields. Processed into jam, jelly, and pies. Only eat the fruit when it's pure bright yellow—green fruit may cause sickness. Seed from a prolific selection from central Michigan. Ripens unevenly here in southern Michigan. Height to 5 ft. Hardy to -25 F.

YEGR Pot, **\$6.25** 25+ **\$3.25**

YEGR-S Packet of 400 Seeds **\$3.75**



Groundcherry Flower

Dwarf Yellow Groundcherry *Physalis longifolia subglabrata Massachusetts* Shorter—Good Fruit Set
Found as a chance seedling in Massachusetts, this strain is more compact and fruits heavily on small plants from 1-2' tall. Extremely fruitful, but wish these would ripen more fully at our farm. Fruit is small but surprisingly good. -25F.

DYGR Pot, **\$6.25** 25+ **\$3.25** ea.



Yellow Groundcherry Husks

New High-Protein Tuber Crop Found Throughout North America—Easy To Grow—Fixes Nitrogen—Heavy Yielding

Orders are shipped in the spring or fall. If we sell out, we will automatically book you for the next season. Directions for cultivation are included with each order. New selections available in Fall of 2013.



Densituberous Groundnut *Apios americana*

The most 'practical' selection to grow because it produces large masses of 1 to 2 inch tubers close together on a long string or root. Harvesting is easier with a larger volume of the crop is in a given area. Tubers form just under the soil surface. One-year tubers are best to eat. Plants have flowers, but no peas have yet been produced. Hardiness -20 F.

DEGR 4 tubers, **\$9.75** Available spring and fall 2013



Densituberous Groundnut

Hudson Groundnut *Apios americana*

Small to medium-sized oblong tubers from 2 to 4 inches long. Attractive-looking groundnut, but may take two years to really yield well, creating a long stolon first then filling the stolon with the 'nuts' the second year. Has yielded well in containers. From J L Hudson, Seedsman. You cannot say enough good about them. Hardiness -20 F.

HUGR 4 tubers, **\$9.75** Available starting November 2013



Hudson Groundnut

Nutty Groundnut *Apios americana*

Originally bred in Louisiana, this selection is tops in tuber size. Nuts average 3 to 5 inches in diameter in their 2nd year and have a very smooth, light skin. Vines can grow up to 50 ft. or more in a single season so trellising would be beneficial. Completely hardy and very productive in southern Michigan. Has done the best in our hoop houses, which extend the season a tad. Excellent potato flavor.

NUGR 4 tubers, **\$9.75** Sold out for Spring, avail. in Nov. 2013



Nutty Groundnut

Virginia Groundnut *Apios americana*

This is a mix of selections that we grow at our farm from that are all produced from seed. Unlike the other groundnuts these will likely be diploids (fertile) and produce edible peas as well as tubers. We will make sure to include at least 2 types that will allow for seeds to set. Trellis these selections to get maximum productivity. -20 F.

VIGR 4 tubers, **\$9.75** Available starting November 2013



Massive Harvest!

SUNCHOKES

Unique Selections by Oikos Tree Crops

Diversity Sunchoke *Helianthus tuberosus* *Ecos*
Wild Seedling Germplasm Grown from Seed
Many different unselected, unimproved, unknown seedlings grown from true seed, not cuttings. In the infertile world of sunchoke flowers these are not that easy to create. Valuable for creating your own named selection or just plain enjoying the great diversity in the sunflower family. An array of flavors, sizes and textures with 'Diversity.' Packages will contain anywhere from 3-5 types. NOT a mix of other varieties we grow. -25F. **DISU** Pkg. 7 tubers **\$9.00**

Wild PJ's Sunchoke *Helianthus tuberosus*
Firm Tubers, Good for Baking—A Good Producer
From Michigan, this selection produces has some of the most solid tubers we have tasted and is supposed to hold up even to baking like a potato. Heavy producer. Plants are the tallest we've grown, reaching 15 ft. easily. Crispy yet firm texture. Found as a chance seedling near a parking lot 'in town.' Clean flavor. -25 F. **WPSU** Package of 7 tubers **\$9.00**

Pink Crispy Sunchoke *Helianthus tuberosus* *Ecos*
Large Pink Tuber—Crisp Texture—Mild Flavor
One of the best selections for eating raw. Highly productive, long crisp tubers form on extensive rootstocks reaching 5 ft. away from the plant (not a clumper). Plants grow up to 10 ft. tall with large flowers up to 3-4 inches. Found as a roadside seedling in south-western Michigan where a farmer unsuccessfully tried to herbicide it to death. Hardy to -25 F. **PCSU** Pkg. 7 tubers **\$9.00**



Supercluster Sunchoke on Strings



Diversity Sunchoke



Wild PJ's Sunchoke



Pink Crispy Sunchoke Flowers

Supercluster Sunchoke *Helianthus tuberosus*
Red Cluster-Fruiting Selection Known for Its Heavy Yields and Smooth, Bright Red Tubers
This red selection is high-yielding, producing long, smooth tubers which cluster near the central stem. Not as heavy producing as Supernova but for a red type perfect in the garden where you do not want it to spread much. OK in poor soil types too. -30 F.

SCSU Pkg. of 2 tubers **\$7.00** Limited supply for Spring of 2013.

Shiawassee Sunchoke *Helianthus tuberosus* -*strummosus*
Wild Selection from Central Michigan

Found as a chance seedling along a ditch in central Michigan. Has long, wide-spreading tubers that are strong flavored—almost like a piney, woody flavor. Edible but best mixed and cooked with other heavier-flavored foods. No knobs on this selection. Height 8 ft. Flowers and fruits early. -30 F. **SHSU** Pkg. 2 tubers **\$7.00**

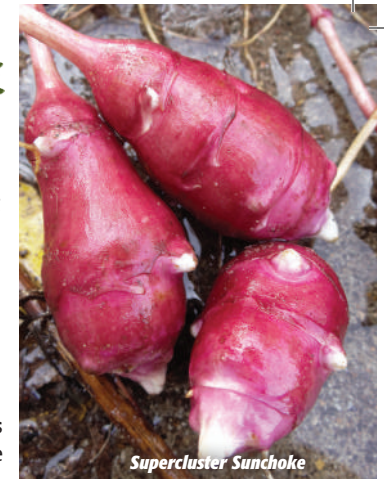
Supernova Sunchoke *Helianthus tuberosus* *Ecos*
Best-Flavored, Sweet Carrot Taste—Huge Yields, Up to 7 Pounds Per Plant

Heavy-yielding, sweet-flavored selection enjoyed by those who are not sunchoke fans. Huge clusters of tubers push aside the soil, making harvesting as easy as reaching into the soil to pluck the tubers like fruit. Unique knobs, very little soil gets caught on the smooth skin, so easy to clean. Could be a new commercial variety with its universal flavor appeal. Let me know what you think. Short plants (5-6') with no flowers and multiple branches all the way to the top, pyramid-like. Hardy to -30 F.

NSU Package of 4 tubers **\$9.00**

Hypernova Sunchoke
Helianthus tuberosus *Ecos*
A Vigorous-Growing, Non-Edible Sunchoke Selection
Hybrid sunflower—Hypernova produces a dense, thick-spreading root with no enlarged tubers. It runners slowly in a large mass. This selection might be useful for livestock or deer browse. In some parts of the world selections like this provide a perennial forage for aquaculture. It is so easy to reproduce it could also work as a means for land reclamation and for its soil-holding properties. In the last 30 years with all the plants I have dug, I have never seen such a magnificent root system. Flowers nicely on 8-10 ft. plants. Some appeared quite fertile for seeds too. Hardy to -30 F.

HYSU Package of 7 root cuttings **\$9.00**



Supercluster Sunchoke



Supernova Sunchoke



Supernova Sunchoke

SUNCHOKES

Stampede Sunchoke *Helianthus tuberosus*

High-Yielding, Short-Season Northern Selection

This extremely productive sunchoke flowers and matures early. Tubers are ready in mid-September. Some large tubers can weigh up to 1/2 pound each. One plant can yield up to 10 lbs or more. Kind of knobby but tubers are produced in big clusters near the main stem and are easy to find and dig. Good flavor. Crispy and edible raw. -30 F.

STSU Package of 4 tubers \$9.00



Stampede Sunchoke

Dwarf Sunray Sunchoke *Helianthus tuberosus*

Heavy Yields—Short Plant to 6 ft.

Selected by the Thompson and Morgan Seed Company, this quasi-dwarf sunchoke produces masses of tubers near the central stem. Easy to grow and certainly one of few that keep a short profile. Ripens early. The nearly-round tubers carry a few knobs but are easy to clean. This selection has a more pronounced 'artychoke' flavor. Hardy to -30 F.

DSSU Package of 4 tubers \$9.00



White Dwarf Sunchoke Flowers

White Dwarf Sunchoke *H. tuberosus* *Ecos*

Short, 3-6 Foot Tall Selection—Bright Yellow Flowers on an Upright Stalk

This is a great ornamental sunchoke that does not tend to overwhelm, or overly spread into the neighboring town. It does produce an edible tuber but normally not recommended to eat as it is small and has a very strong pine flavor. Clean foliage. Upright, straight growth habit. -30 F.

WDSU Package of 4 tubers \$9.00

White Fuseau Sunchoke *Helianthus tuberosus*

Large, Smooth, Crispy White Tubers—Easier to Clean Than Some Other Varieties
Highly-productive white form with no side nodules. Later ripening but perfect for sandy soil—comes out clean. Nice, smooth flavor. One of the better-flavored cultivated selections with a thinner skin than other varieties. Spreads by long rhizomes which fill by early October here in southern Michigan. Hardy to -30 F.

WFSU Pkg. 7 tubers \$9.00



White Fuseau Sunchoke

Red Fuseau Sunchoke *Helianthus tuberosus*

Clusters of Bright Red Round or Oblong Tubers—Good Flavor and Easy to Clean
Another crispy sunchoke with thin skin and good flavor. Does not have side nodules so it is easy to clean. This variety is also a vigorous, tall plant up to 10 ft, with good productivity. Late-ripening. Hardy to -30 F.

RFSU Pkg. 4 tubers \$9.00 Ships starting mid-Oct. 2013.



Red Fuseau Sunchoke

Waldspinel Sunchoke *Helianthus tuberosus*

"Gem of the Forest"—Reddish-Pink and White Sunchoke

From Austria, this small red sunchoke is one of the better-colored reds. Bumpy surface but easy to clean. Much like the fingerling potato of the sunchoke world. Waldspinel is Austrian; 'Wald' -Forest or woods and 'spinel' for gem. Has a nice dense crispy texture with a clean flavor. -25 F.

WASU Pkg. 4 tubers \$9.00

Clearwater Sunchoke *Helianthus tuberosus*

Mild, Tender Flavor—Mid-Sized Plant to 6-8'
Found in Maine as a chance seedling, Clearwater is a white potato-like tuber with few knobs and a crispy water chestnut flavor. Plants spread evenly outwards. The tubers are widely spaced so watch out when you dig them. Hardy to -25 F.

CLSU Pkg. 4 tubers \$9.00



Diversity Sunchoke Flowers

Red Rover Sunchoke *Helianthus tuberosus*

Easy to Clean—A Prolific Producer—Just Plant It and Run Away

This fast-growing artichoke grows up to 12 feet in height and spreads by long rhizomes. Huge yields follow and this is one of the most prolific red ones at our farm. The smooth red tubers have no knobs making it easy to clean. Tubers average 1" in diameter and up to 6" long. Flavor is good with some 'artichoke' aftertaste. Ripens in October. Hardy to -30 F.

RRSU Package of 7 tubers \$9.00



Harvesting Sunchoke



Red Rover Sunchoke

ROOTS, TUBERS & BULBS



Chufa tubers

Maliner Kren Horseradish *Armoracia rusticana*
Large, Pure White Roots—Bohemian Selection
“Plant your horseradish where the cows are.” Produces some of the best quality roots in high-organic soil. Horseradish was originally found wild along the coastal areas in northern Europe, its cultivation goes back to 1500 BC. Once called ‘stingnose’. Root cuttings can be taken from our pot-grown plants to create numerous plants, or plant the whole thing to create a massive clump. Height 2 ft. Hardy to -40 F.

MKHO Pot, \$5.75



Horseradish Roots

Licorice *Glycyrrhiza glabra* Russian Strain
Nitrogen-Fixer—Flavoring—Medicinal Plant
Cultivating licorice is very easy. The taproots go deep and can be harvested after 2-3 years. The largest, best quality roots are produced in high-organic soil. Mulch if you can. Fixes its own nitrogen. Highest in glycyrrhizin—30 to 50 times sweeter than sucrose. Height 3 ft. Hardy to -20 F.

LICO Pot, \$7.75



Licorice Root

Licorice Foliage

Spikenard *Aralia racemosa*
Woodland Root Beer Plant—Aromatic Root
Provided the licorice flavor to root beer. Found in rich woods from Quebec to Kansas. A Menominee dish was made using the root of spikenard, wild onion, gooseberry and sugar. The blanched young spring shoots were also eaten. Fruit is relished by wild turkey. Grows best in part to full shade. A long-lived perennial, spikenard can reach up to 6' in moist soil but is usually half that in cultivation. Multi-seeded in pots. Seed source from Michigan's upper peninsula near Lake Superior. Hardy to -30 F.

SPIK Pot, \$4.75 25+ \$2.75

Wild Lily *Lilium sp. Ecos*
Rare Edible Species Lilies From Asia
Selected from a wide range of non-hybrid lilies. A food source for many cultures throughout Asia. Our seeds were originally collected from the wild and now reside as a ‘bank’ of edible lilies, many from Japan, Russia and Korea. We now harvest seeds at our farm specifically for this purpose. Many are from lancifolium, brownii, pumila to name a few. Non bitter, taste like potato. Harvest the bulbs in the fall and split them up at the same time to increase your planting.

WILI Pot, \$3.75



Wild Lily Flower

Marshmallow *Althaea officinalis* Vegetable, Root & Leaves
Widely used for its mucilaginous properties, the roots and leaves can be cooked and eaten. Besides campfire use, the roots contain 37% starch. Can be added to soups or boiled to create an egg white effect for other dishes. Flowers harvested for tea. Harvest roots in 2-3 yrs. Can be dried. Best in moist soils. Height 6ft. -20 F. **MARS** Pot, \$7.75



Marshmallow Flowers

Manroot *Ipomoea leptophylla*
Bush Morning Glory—Sweet Potato Relative
Perennial species of morning glory found in the western U.S. as far north as South Dakota. Young roots said to have a flavor similar to sweet potato. Its name is derived from the size of its taproot which can be 2 ft. across and 5 ft. long weighing up to 25 lbs. Obviously drought and meteorite tolerant. Not much is known about cultivating it for its edible roots, but the consensus is the small roots when 2-3 years old have the best flavor, sweet and tender. Can possibly be cultivated from root cuttings too. Needs a sunny dry location. -20 F. **MANR** Pot, \$8.75 25+ \$6.25



Manroot

Chinese Mountain Yam *Dioscorea batatas*
With Aerial Tubers—An Important Food Crop—A Perennial Yam
From eastern Asia, this yam is well known there—boiled, fried, baked, mashed and added to soups. Small 1/2" tubers are produced at the leaf axils giving it the nickname “aerial tuber”. The in-ground tubers can be harvested in 1-2 years and can reach up to 3 ft. long by year 4. Works well in pot culture too. The roots contain 20% starch. The flavor is similar to a crunchy water chestnut. Cinnamon-scented flowers. Doesn't produce seeds. Hgt. 15 ft on a trellis. -20 F.

CMYA Pkg. of 7 mini tubers \$8.75



Chinese Mountain Yam

Tiger Almond *Cyperus esculentus var. sativa*
Chufa—Nutritious, Delicious Tuber—**NEW!**
Going back 5,000 years, chufa was cultivated by the Egyptians, grown in Spain, distributed by the Arabs in Africa, selected by the Paiute Indians in N. America and is currently undergoing worldwide research for bio fuels. Tubers contain 20-30% oil—with a composition similar to olive oil—with 80 percent unsaturated fats. Coconut flavor, crunchy and chewy texture when eaten raw. “Horchata” drink or tiger milk is a blended version of chufa. Clump-forming. Produces large clusters of tubers just below the surface of the soil which can be pulled out like harvesting carrots. ‘Sativa’ is the Asian form of chufa which is seedless and does not survive winters where the ground freezes. Stores up to 8 months once dried. High yields. No disease or insect damage but consumed by voles. 80-100 days. Height 3 ft.

TIAL Pkg. of 25 tubers \$8.75



Tiger Almond

POTATOES



Ecos Purple

Ozette *Solanum tuberosum subsp. andigena*
Best Flavor and Texture of Potatoes We've Grown Found as a castaway from Spanish ships visiting the Makah Nation in the Pacific NW in 1791. Genetically-unique selection direct from S. America (most potatoes went east to Europe and then got selected). One of the most delicious potatoes, with a dense, solid white flesh. Rarely can you rave about a potato with as much gusto. Some insect susceptibility has made it a favorite of certain leaf-eating beetles. Needs water during droughts. 90-100 days.

OZPO Pkg. of 6 tubers **\$7.75** *Organically-Grown*

Ecos Purple *Solanum ajanhuiri*
Unique Alpine Potato—Withstands Freeze

Cold-hardy potato species from the Andes able to tolerate freezing soil and not turn to mush. To perennialize this potato, it's best to plant Ecos in a dry, sandy location. Tubers can reach up to 6" long and 1.5" thick in ideal conditions. Vines will self-root as they touch down and produce small tubers along the nodes. Smooth texture, excellent for soups and mashing. To avoid total freezing keep the small 1/2 round tubers in the soil at various depths and bring some tubers inside to store in the winter just in case.

EPPO 4 tubers **\$8.75** *Sold out spring of 2013—Avail. starting in fall.*

'Fullspectrum' Potatoes *Solanum x tuberosum x ajanhuiri* Ecos
Potatoes grown from true seeds with a variety of colors, flavors and sizes. More on this selection starting in the fall of 2013. Tubers will never be the same. Run away from uniformity. Far far away....

Earth Pea *Lathyrus tuberosus*
Earth Chestnut—Perennial Edible Tuber Pea
Tastes Similar to a Sweet Chestnut

Produces a sweet tuber that can be harvested in the fall or early spring. Each plant produces small underground rhizomes eventually filling an area with tubers 1-2 inches in size. Mild pea-like flavor with a crispy texture. Cultivated to some extent in Europe. Rated very high in taste tests by the Plants for a Future Database. Found growing wild in grassy meadows in Russia and Siberia. Listed as hardy to zone 5-6. Height 3 ft. on a trellis. Hardy to -20 F.

EAPE Pot, **\$7.75**



Ozette



Ecos Purple



Earth Pea Flower



Earth Pea Tubers

SCORZONERA



A sunflower relative, scorzonera is both a leaf and root crop, easy to grow in a variety of soils and climates. Its tap-rooted nature, ability to withstand extreme environmental conditions AND delicious flavor makes it a must for the perennial vegetable gardener. We are propagating the alpine species as well as selections of *Scorzonera hispanica* listed below.

Duplex New selection produces long, straight roots that taste like parsnips. Foliage from Duplex does not die down during the heat of the summer. Edible leaf crop too. Considered one of the best scorzonera selections available. Does not get woody with age. Even 3 year old roots taste delicious. Multi-seeded in pots. Hardy to -25 F. **DUSC** Pot, **\$3.25** 25+ **\$2.65**

Hoffmanns Schwarze Pfahl This is a German selection noted for its very large root and improved flavor, much like a mild salsify. Older plants do not become woody with age and will over-winter without protection. Like all scorzonera, this selection can be propagated by seed. -25 F. **HSPS** Pot, **\$3.25**

Black Russian Carrot-type roots can be steamed, batter-fried, or added to soups. Roasted roots were used as a coffee substitute. Large roots, up to 15 inches long, with a smooth texture and rich flavor. Does not grow woody with age like turnips. Produces a sizeable root in 2 years. Lettuce-flavored foliage can be harvested in the spring. Zone 4. Hardy to -25 F.

BRSC Pot, **\$3.25**

Maxima Known for its large, smooth-textured roots which are similar in size to a carrot. As a side benefit, this selection also produces prodigious amounts of greens that have a mild lettuce-type flavor. Seeds can be saved from this plant and sown like carrots. Hardy to -25 F.

MASC Pot, **\$3.25**



Scorzonera Leaves



Scorzonera Roots



Black Russian Leaf

PERENNIAL GREENS

VIOLETS

Viola sp.

'Edible Blue' Wild Violet

Viola sororia Ecos

Edible Groundcover—A Colonizing Salad

Violets can be eaten as cooked green, with okra-like qualities, or fresh in a salad. Leaves are rich in Vitamin A and C. Edible Blue is a selection with dense growth and dark green leaves. Best quality leaves are harvested in the spring and early summer. Shade is best. Height 4 inches, hardy to -25 F.

EBWV Pot, \$3.75 FG, (Pkg. of 10 roots) \$12.00

'Edible White' Wild Violet

Viola sororia

Sweet White Violet—Mild Flavor—Juicy Leaves

Found as a seedling in our 'Edible Blue' patch, this selection is even more tender and mild. Pure white blossoms. Light green foliage. Best in shade. -25 F.

EWVW Pot, \$5.75

Purple Alpine Violet

Viola labradorica Purpea

Edible Ornamental—Horticultural Selection Has dark purple leaves. Best in soup—higher in mucilaginous compounds compared to others. Dense-growing clumps. Found in the far north into zone 2 even, native to Greenland. Seed-grown from a reputable supplier so I think this is not a hybrid or another species. Height 8 inches, hardy to -40 F.

PAVI Pot, \$5.75

Kidney-Leaved Violet

Viola renifolia

Thick, Small Leaves—Woodland Selection—Spreads by Stolons High in mucilaginous compounds, great for soup. Mild flavor. Its short height (3 in.) and dense colonizing effect make it easy for edible landscapes. Spreads slowly. Clusters of white flowers are also edible. -25 F.

KLVI Pot, \$5.75

Dark Freckles Violet

Viola sororia

Ornamental Edible—Vigorous, Clump-Forming Like 'Edible Blue' but a more vigorous clump-former with unique speckled flowers. Crispy, juicy leaves. Mild. Height 4 in. -25 F.

DFVI Pot, \$5.75



'Edible Blue' Violet



'Edible White' Violet



Purple Alpine Violet



Kidney-Leaved Violet



Dark Freckles Violet

Long-Spurred Violet

Viola rostrata

Woodland Species—Dark Green Leaves This species represents one of the best selections for edible shade gardening. The dark green leaves tend to grow upright making them easy to harvest and clean. Each plant produces a whorl of leaves. Bright floral display in June or July. -25 F.

LSVI Pot, \$5.75 25+ \$2.75

Emperor Magenta Red Violet

Viola sororia

Ornamental Edible—Vigorous

Another great flowering type from a genus of familiar and easily cultivatable plants. Tastes similar to other *V. sororia* but more vigorous in summer. Reddish flowers. Can be divided easily. Crispy leaves. Mild. Height 4 in. Hardy to -25 F.

EMRV Pot, \$5.75



Long-Spurred Violet



Emperor Magenta

SORREL

Rumex sp.

Edible Greens with a Lemon Tang

High in vitamin C, calcium, phosphorous and potassium. Grows like swisschard. Delicious raw in salads or cooked for soup—try Cream of Sorrel. Long-lived and durable, tap-rooted sorrel is easy to grow in any soil. Cut back the flower stalks to keep the leaf production high. French strain, large upright leaves. Hardy to -30 F.

SORR Pot, \$3.25 25+ \$2.25

SORR-S Packet of 1,100 seeds \$3.75

Debelleville Sorrel

Culinary selection noted

for its dark, tall, thick, large green leaves. Produces fewer seeds and seedheads than the French or Broad Leaf types. Light mild tang flavor, good in soup.

DESO Pot, \$3.75

Red-Veined Sorrel

Rumex sanguineus ssp. *sanguineus*

Ornamental Edible—Red-Colored Sorrel

Mildest flavor of all sorrels. Harvest early in the season only—as summer progresses it becomes tough and chewy. Has done better under poly. Does not set seeds here. Our plants produce the heavily red-colored types and have overwintered for us in our hoop houses. (Zone 6ish) Multiseeded in pots. Height to 6 inches.

RVSO Pot, \$3.75



Sorrel Leaves



Debelleville Sorrel



Red-Veined Sorrel

PERENNIAL GREENS

DANDELION *Taraxacum officinale*

Edible in Their Entirety

Nutritious green high in vitamin A and vitamin C. Has more calcium and iron than spinach. We offer selections of this common plant with less bitterness and larger leaves. Plants are multi-seeded in pots. Root cuttings can be done to increase your dandelions in the lawn of life. Hardy to -30 F.

Nouvelle

French type with very good leaf quality for eating fresh or cooked. Dark green broad leaves. Less bitter. Makes a nice whorl of leaves.

NODA Pot, \$2.75 25+ \$1.75

Vollherzigen

A German type with less bitterness. Nice rosette of dark green leaves. Good in salads. For less bitterness, try growing your dandelions in light shade. For consuming the leaves in salads, use a 1 in 10 ratio of lettuce to mellow out the bitterness.

VODA Pot, \$2.75 25+ \$1.75

Thick Leaf Improved

French strain—best-yielding selection, making it easy to harvest the upright growing leaves up to 12 inches long. Very vigorous. Has a large harvestable multi-tap root.

TLID Pot, \$2.75
25+ \$1.75



PERENNIAL GREENS

Less Sting Nettle

Small Solomon's Seal *Polygonatum biflorum*

Edible Shoots—Woodland Asparagus
Harvest the young shoots in their first leaf. Produces a delicious green vegetable with a subtle cucumber-like flavor. Smooth texture. Can be eaten fresh or steamed. Grows best in a semi-shady area. Forms a dense colony of plants. Wisconsin seed strain. Height from 1.5-3 ft. Hardy to -30 F. **SSSE** Pot, \$8.75



Small Solomon's Seal

STINGING NETTLE

Urtica dioica

Healthy Edible Greens

High in vitamins A, C, calcium, magnesium and potassium, nettles have been used for poor circulation, prostate cancer (the root), diarrhea, and hay fever to name a few. Spreads quickly by rhizomes, colonizing large areas. Due to its sting, not fully appreciated until cooked and served with butter. (The sting disappears with cooking) Harvest the greens in spring when 6-12 inches tall, or pluck from the stem. Hardy to -30 F.

'Less Sting' Stinging Nettle

Produces fewer hairs—almost none on the leaves. The stems are loaded with sting. Easier to pick, even without gloves if you dare. Multi-stemmed. North American species. Height to 6 ft.

LSSN FG, Package of 3 rhizomes \$7.75

Cultivated Stinging Nettle

European or hybrid type: Cultivated selections originally grown from seed at our farm and then selected for large leaves—twice the size of 'Less Sting'. Good flavor and texture with this selection. Large yields of leaves. Will self seed. Rhizome-type growth. Tolerates shade.

CUSN FG, Package of 3 rhizomes \$7.75



'Less Sting' Nettle



Cultivated Nettle

NOTE: FG = field-grown bare root plants
Pot = grown in paper pots

PERENNIAL GREENS BRASSICAS

Cabbage / Kale / 'Cole' Family

Perennial cousins of some garden favorites.
Highly-nutritious, with many anti-cancer qualities.

Haa Collards *Brassica oleracea var. acephala* Biennial
Healthy Greens—Perennial Version
Collards have long been cultivated as a source of healthy greens, going back at least 2000 years. High in vitamin C and fiber, collards contain antioxidants and anti-cancer compounds. Haa is a possible selection we found to be more perennial in nature. It has survived in Michigan for the last 4 years, always regenerating from the stems, and self-seeds easily. (-5 F with no problems.)

HACO Pot, \$3.75

Seakale *Crambe maritima* Perennial Kale, Hardy to -25F
Edible Flowerbuds, Leaves and Shoots
This perennial wild brassica is found along the coasts in northern Europe. It does best in sunny, rocky, sandy soil low in organic matter. Yields are typically low for the first few years until the tap root gets established. Use as a blanched leaf crop or harvest leaves like kale. Strong flavor. Have 2 plants for seed production. Height and width to 3 ft. -20 F.

SEAK Pot, \$4.25 Avail. 6/2013 (1-going-on-2-year plants)

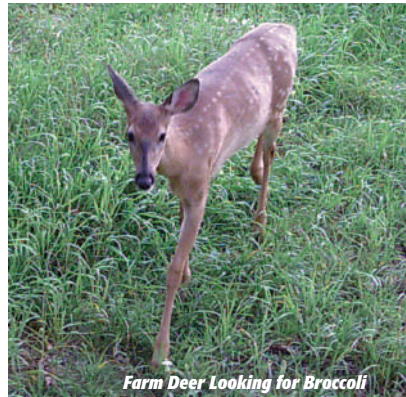
Nine-Star Perennial Broccoli *Brassica oleracea botrytis asparagoides*
Currently out of production but will be available again in the Fall of 2013, if the deer decide not to go on a broccoli binge again. We are currently trying to 'improve' this strain for increased vigor and hardiness—so even the deer will be appreciative.



Sea Kale



Nine-Star Broccoli



Farm Deer Looking for Broccoli

GREENS

Giant Tree Spinach

Chenopodium giganteum
Annual—Highly-Nutritious Salad Plant—for Calcium and Vitamin A
One of the most delicious and palatable forms of lambsquarters ever grown. Contains no traces of bitter saponins, plus the leaves remain edible throughout summer without becoming dry and fibrous. Can be cooked like spinach or mixed with other greens. Surface-sow seeds. Germination will take place within 7-10 days. Begin harvest in 60 days. Self-sows on disturbed soil. Height to 7 ft. Annual.

GTSP Packet of 825 seeds, \$3.75



Giant Tree Spinach

Rugel's Plantain

Plantago rugelii
Edible Leaves—Medicinal—Nutritional
One of the most common genuses, reaching lawn-weed status, Plantago is not something you would normally plant. This North American species IS worth cultivating as a perennial salad crop due to its flavor and nutritional qualities. It is not as acrid as the European version, plus high in Vitamin A (100 g. is equivalent to a large carrot). Contains compounds to facilitate healing of wounds (Aucubin and allantoin). Harvest the leaves while young before they get too fibrous to eat. Best cooked. Height to 18" flower spikes. (Possibly secondary flour crop!). -30 F.

RUPL Pot, \$4.75 25 + \$2.75

RUPL-S Packet of 150 seeds, \$3.75



Rugel's Plantain

Japanese Angelica Tree

Aralia elata
Harvest the Young Shoots
This species is known as tara-no-ki in Japan, where the young shoots are harvested and then tempura fried. Harvest the shoots young (6 inches or less) to avoid the prickles on the petioles and peel the stems if any appear to have developed. This plant produces runners and has spread 15 ft. after 20 years of cultivation at our farm. No self-seeding is evident. Height 20 ft. Hardy to -20 F.

JATR Pot, \$4.75 25+ \$2.75

HERBS & FLAVORINGS

Hops Cones
Photo: Mark Angelini

NORTH AMERICAN MINTS

Hops *Humulus lupulus*

Brew—Medicinal—Greens with Fragrance

Known for its essential oils, the female cones impart an aroma and bitterness to beer. These compounds stimulate gastric secretions, improving appetite. The young shoots are harvested as a perennial green in France and cooked in the same way as asparagus, called 'jets de houblon'. Seed-grown hops of unsexed seedlings. Hardy to -20 F.

HOPS Pot, \$7.75



Hops

Sweetflag *Acorus calamus var. americana*

Fragrance, Flavoring, Tea, Candied Roots

Found throughout North America, the roots and tops have a delicious sweet vanilla-cinnamon flavor. Sweetflag grows in large colonies in wetlands, but easy to cultivate in non-wetland conditions. The thick, rather fibrous roots can be used for tea or candied. Young shoots can be consumed in small amounts. (As far as we know—we have the diploid Native Michigan seed source which is considered completely safe to consume) Height to 5 ft. Hardy to -30 F.

SWEE Pot, \$7.75



Sweetflag

Mints—Cultivated Varieties

Spearmint *Mentha spicata* Ecos

Delicious Rich Mintiness—Spreads Quickly

A thick-leaf selection used as companion crop in our field plantings for its insect-confusing scent.

Ecos has survived better in our dry soils than other spearmints we've tried. 12-18 inch height. Hardy to -25 F.

SPEA FG, Package of 2 rhizomes or pot \$4.75

Applemint *Mentha x villosa*

Highly-Vigorous—Spreading—Aromatic—Delicious Tea Selection

Thick rhizomes are able to compete with quackgrass in areas where we do not mow or provide weed control. Makes a delicious tea with hints of citrus. Pest confuser—diffuser plant for our orchard. More vigorous and drought-tolerant than any mint we have grown. Height to 2 feet, -25 F.

APPL FG, Package of 4 rhizomes \$7.75



Applemint

Julius Wild Mint *Mentha arvensis villosa*

Great Selection for Tea

Cutting-grown selection produces a succulent leaf that is not as furry as other *arvensis* types. Excellent for tea. Strong yet bright, if that makes sense. Not as vigorous as other mints in normal garden soil. Great for wet soils. From Michigan. Height 1ft. -25 F.

JWMI Pot, \$6.75



'Breathe' Wild Mint

'Breathe' Wild Mint *Mentha arvensis villosa*

Strong Flavor—Vigorous-Growing

This 2-foot tall mint was found growing in a rock-strewn boulder field in northern Michigan. Flavor is powerful, clearing out all nasal passages. Spreads by rhizomes—in 2 years it covered a 6'x6' area. -30 F.

BWMI FG, Pkg. of 2 rhizomes \$4.75



Julius Wild Mint

Huron Wild Mint *Mentha arvensis villosa*

Compact Selection with Dense Branching

Good-yielding leaf selection of our native mint. Found as a chance seedling growing in pure sand on an island in northern Michigan. Plants tend to produce more side branching. Minty freshness is to be expected with this selection. Hardy to -30 F.

HWMI FG, Pkg. of 2 rhizomes \$4.75



Huron Wild Mint

Virginia Mountainmint *Pycnanthemum virginianum*

Blend of Licorice and Peppermint

Makes a dark, rich tea. Plants grow in dense clusters up to 3' tall with a flat-top floral cluster which attracts many types of butterflies. Harvest the leaves in the early morning, prior to flowering in June or July. In 25 years our untended planting has 'traveled' 30 feet. A very drought-tolerant mint. Wild Illinois seed source. -30 F hardiness.

VIMO Pot, \$4.75 FG, Pkg. of 10 roots, \$15.00



Virginia Mountainmint

See our website for add'l varieties of many plants.

AROMATIC & TEA PLANTS

Kansas Wild Bergamot

Monarda fistulosa var. *menthifolia* Ecos
Tall (to 5') Aromatic Monarda—Great for Tea
Seed wild-collected by a wild food advocate who found a good tea selection. We produced many seedlings from the original and found a delicious blend of licorice, mint and lemon. Resistant to mildew. Butterflies and bees are completely in love with the flowers. Plants spread slowly. Grow in sun or part shade. Hardy to -30 F.

KWBE Pot, \$3.75 25+ \$2.75
FG, Package of 10 rhizomes \$7.75

KWBE-S Packet of 250 seeds \$3.75



Kansas Wild Bergamot

Zaatar *Origanum syriacum*

Powerful, Flavorful Middle Eastern Oregano
The least bland of the oregano family, zaa'tar is strong. Add fresh leaves to warm olive oil and use as a spread or dip. Tastes like a concentrated thyme. Tea is made from this selection. Hardy to -15 F. For best flavor, do not fertilize or over-water. Sprawling, to 1 ft. height.

ZAAT Pot, \$7.75



Zaatar

Lake Huron Tansy *Tanacetum bipinnatum* var. *huronense*

Insect Repellant—Successful Against Colorado Potato Beetles and Ticks
North American species, from Greenland to Michigan. Spreads slowly by runners. The fragrance is unique, like pine and fruit mixed. The miners in Michigan's Upper Peninsula are said to have drunk tansy tea to ward off sickness. Using tansy for human consumption is risky and it is recommended only as a condiment. We are trying it as a botanical pesticide. Height 1-2 ft. Hardy to -40 F.

LHTA Pot, \$5.75 25 + \$3.25



Lake Huron Tansy

Lemon Catnip *Nepeta cataria citriodora*

Lemon-flavored perennial herb great for tea. Very easy to grow and will self-seed under the right conditions. We are using this plant as a source for tea and as a 'disrupter' for insects in our orchards. Full sun, grows in almost any soil. Height 3 ft. Hardy to -20 F.

LECA Pot, \$5.75



Lemon Catnip

PERENNIAL ALLIUMS

He Shi Ko Bunching Onion *Allium fistulosum*

Perennial heirloom bunching onion from Japan. Mild flavor with straight stalks. Vigorous and very adaptable here in MI. Produces fertile seeds for replanting. Overwinters. Plants reach up to 2 ft tall with spears up to an inch across. -20 F.

HSKO FG, Bundle of 25 \$15.00 (\$.60 each)

HSKO-S Packet of 225 seeds \$3.75



He Shi Ko Onion

Red Welsh Onion *Allium fistulosum*

Red Perennial Bulb and Spring Onion
Multi-stemmed onion produces strong-tasting bulbs up to 1 inch in diameter, plus edible mild-tasting leaves into the winter. Can be used cooked or raw. Spreads slowly, growing in clumps. Sets seeds. Multi-seeded in pots. Hardy to -20 F.

RWON Pot, \$3.75



Red Welsh Onion

Evergreen Spring Bunching Onion *Allium* sp.

Perennial Bunching Onion From Idaho
Evergreen is a species onion that can be harvested like green scallions. Overwinters easily and can be grown from seed which is easy to germinate. Pungent with a bit of hotness. Multiseeded in pots. Hardy to -20 F.

ESBO Pot, \$3.75

Siberian Garlic *Allium* Cold-Hardy, Strong-Flavored Garlic

Highest allicin content of all garlics. Allicin is said to lower cholesterol and boost your immune system. Good-yielding northern selection with a light pink skin. Mid-season. Pot-grown, so can be spring planted, divided and replanted in Sept. Actively-growing when shipped.

SIGA Pot, \$3.75

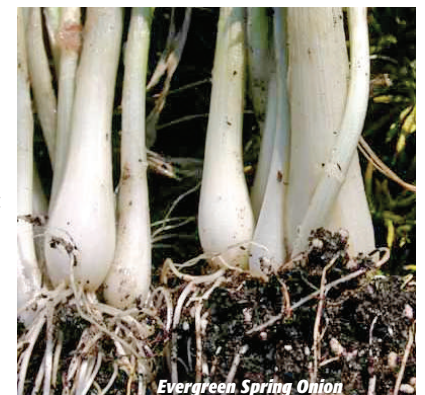
Sacred Forest Garlic *Allium* Perennial Garlic

Produces Mini + Large Bulbs—Medium Hotness
A chance seedling found in southern FL. More perennial than cultivated garlic, Sacred Forest produces additional mini side bulbs that take 2-3 years to mature. These can be left in the ground and will not freeze over winter. When you pull the 1 year clove-grown bulbs out of the soil to eat, the mini bulbs will stay. Planted in our hoop houses in August, Sacred Forest produces a significant second crop of greens from Sept-Dec. Other garlics do not do that here. Highly rated by everyone at our farm. Tall—height to 5 ft. Hardy to -20 F.

SFGA Pot, \$4.75 Available year round.

Plants are growing when you receive them.

SFGA-B Pkt., small bulblets avail. in Sept. only. (See web)



Evergreen Spring Onion

SEEDS



Snap Melon

Snap Melon *Cucumis melo momordica*

Melon species native to India, called “phut” which means “to split”. Here at Oikos the extremely drought tolerant, floriferous vines grow to 6 to 9 ft. The slightly sweet fruits are almost tasteless but can be pickled or stir fried when in the green state. Traditionally used as moisturizer for the skin or for treatment for burns or abrasions, considered anti-fever. Ripens in 85 days.

SNME Packet of 25 seeds \$3.75

Jelly Melon *Cucumis metuliferus*

Kiwano—African Horned Cucumber—Heavy Producer—Immune to Deer, Insects, Drought Ancestors of the cultivated melons Kiwano is indigenous to the Kalahari Desert where it is one of only two plants that provide a water source during the dry season. The fruit can be eaten at various stages of ripening from green to bright yellow. The skin is high in vitamin C and the fruit is rich in minerals and potassium. In Michigan, our Kiwano planting thrived and produced loads of fruit in a small area partially shaded by oaks on a sandy hillside. Really good fresh. Ripens in 80-90 days.

JEME Packet of 25 seeds \$3.75



Snap Melon



Jelly Melon

SUNFLOWERS—PERENNIAL

Giant Sunflower *Helianthus giganteus*

One of the most robust North American species reaching 12 feet in good locations with full clusters of bright yellow flowers with small but edible seeds. The birds seem to know exactly when they ripen. The thick tuberous roots really anchor this open prairie plant. Clean foliage. Our plants are grown from seeds. Hardy to -30F.

GISU Potted plant, \$7.75

Cup Plant *Silphium perfoliatum*

Cupped Leaves Hold Water—One Stop Refueling

One of the most interesting plants—stay thirsty my friends. Leaves are folded near the square stem and hold water. Tree frog home. Multibranched plants up to 8 ft. tall with dense clusters of flowers. Seeds are consumed by birds. The root was used externally for the treatment of pain and arthritis. Not a true sunflower but close. Grown from seeds. -30 F.

CUPL Potted plant, \$7.75



Cup Plant

SEEDS



Cup Plant

SUNFLOWERS—ANNUAL

Cucumberleaf Sunflower

Helianthus debilis spp. *Cucumerifolius*

One of the best species sunflowers for attracting birds and pollinators. Immune to mildew and rust, glossy leaves make it ideal for drought tolerance. Small seeds are produced which ripen over a long 2 month period ideal for birds. The plants are multibranched reaching 4-6 ft. tall. Does well in a variety of soils. Upright flowers. 70-90 day seed ripening. Flowering in 50-60 days.

CUSU Packet of 100 seeds \$3.75



Cucumberleaf Sunflower

Havasupai Sunflower *Helianthus annuus*

Collected by plant researcher Dr. Gary Nabhan from the Havasupai tribe in the Grand Canyon region. Used in breeding healthier sunflowers because of its immunity to rust and mildew. Really a fantastic growing sunflower at our farm—easy to grow and harvest the seeds with few, if any worms. The seeds are small but highly highly flavored. Does not blow over in the wind here too. Height 5-7 ft. 70-80 days.

HASU Packet of 50 seeds \$3.75



Giant Sunflower

Hopi Black Sunflower *Helianthus annuus*

Like Supai another small headed sunflower with more of the ‘wild’ background with rich flavored oil seeds produced on short plants to 8 ft. This selection is used for dye but also has a great real sunflower flavor to the seeds. 70-80 days.

HBSU Packet of 50 seeds \$3.75

Arikara Polyheaded Sunflower *Helianthus annuus*

Quasi wild type heirloom from North Dakota sunflower with large seed heads produced in clusters. We reselected this strain the best we could using only plants with multiple seed heads. Large ‘normal’ seeds are produced in abundance on plants that reach 8-10 ft. tall. 80 days.

APSU Packet of 40 seeds \$3.75



Arikara Sunflower

NOTE: If you make an all-seed order with no plants, tubers or roots, the cost of shipping is a flat \$6.00. Your seeds will be shipped via USPS.

SEEDS

Alberta Clipper Corn *Zea mays Ecos* 60-day Flour Corn—Very Early-Maturing Dry Field Corn



Heirloom Canadian selection for short-season areas. Our planting last year at the farm emerged by May 21. Ears were field-dried beginning August 1. Can be dried for meal or eaten fresh if roasted. (Not a sweet corn but can be eaten raw for about one week during ripening.) It took us about 3 years of growing out to get a uniform crop with larger ears. We are now in our 4th year and have managed to double the ear size up to 6 inches. Yields from Alberta Clipper are less than half of conventional seed corn but the short 3-4 ft plants make it ideal for small-scale production. Planted early enough it will not cross-pollinate with other field corn, making it ideal for saving your own seed without fear of cross pollination or contamination by GMOs. Can be planted more densely than field corn with rows only 24 inches apart. No corn borers evident and very little corn ear worm.

ACCO-1 1 ounce of seed (180) **\$3.75**
ACCO-4 4 ounces of seed (720) **\$11.75**



Alberta Clipper Corn
Image Taken 1st Week in August



Kanaan Cherry Tomato

Kanaan Tomato

Solanum pimpinellifolia
A Larger-Size Cherry Tomato with a Great Flavor
Highest resistance to late blight. Early tasty, indeterminate selection with greater density than other cherry tomatoes. Specifically bred for late blight resistance, keeping its foliage green and healthy throughout the season. No cracking, plus best of flavor at our farm. Heavy yields on a vigorous plant.

KCTO Pkt. 100 seeds **\$3.75**

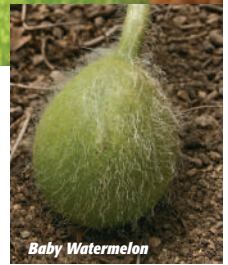
See our website for more seed offerings.

SEEDS

Egusi Watermelon *Citrullus lanatus var. mucospermus*

Egusi watermelon is a land race of primitive watermelon found in western Africa where it is raised for its seeds, called 'egusi.' Only the seeds are edible, the fruit is too bitter to consume. The protein- and oil-rich seeds are used in sauces and impart a peppery flavor. Seeds contain from 20-40% oil with 60% being linoleic acid. The seeds can be roasted and prepared the same way pumpkin seeds.

To process the seeds is simple. Collect the fruits in late fall, make a small incision on each side and let sit for 7-14 days outside. The bitter pulp will turn to a clear liquid like aloe vera with very little odor. Strain the seeds with water, they come out clean in one wash. Let dry for a week and you are ready to roast. Plants grow from 20-70 ft. long. Additional irrigation appears to lower yields. Makes a nice ornamental annual vine impervious to deer, woodchucks and every insect known. Can climb over shrubs and be trained to grow up trees. 75-100 days to ripen. Best to let go until frost, then process. If you want to save your own Egusi seed for planting next season, do not grow other watermelon nearby to avoid hybridization.



Baby Watermelon



Bigfruit



Bigfruit Egusi Watermelon



Papershell Egusi Seeds



Bigfruit Egusi Seeds



Papershell Egusi Watermelon

Papershell: Small fruits with very thin paper-shelled husk (seed coat).

Seeds are much easier to consume whole. **EPWA** Packet of 5 seeds **\$3.75**



Bigfruit: Large fruits up to 20 lbs. Loads of seeds, typical watermelon-type seed with a normal husk (seed coat). A bit milder than Papershell in flavor. **EBWA** Packet of 20 seeds **\$3.75**

SEEDS

All Seed Packets **\$3.75** each — No Minimum Order
Flat Shipping Rate **\$6.00** Priority Postal
(no matter how many packets you order)

| | Common Name | Code | Scientific Name | Packet Size |
|-------------------|---------------------------------|--------|--|--------------------------|
| | Alberta Clipper Corn | ACCO-1 | <i>Zea mays</i> ECOS | 180/1 oz |
| | Alberta Clipper Corn | ACCO-4 | <i>Zea mays</i> ECOS | (\$11.75) 720/4oz |
| | Glaskins Perpetual Rhubarb | GPRH-S | <i>Rheum rhabarbarum</i> | 50 |
| | He Shi Ko Bunching Onion | HSKO-S | <i>Allium fistulosum</i> | 225 |
| | Sacred Water Lily | SWLI | <i>Nelumbo nucifera</i> | 10 |
| | Thicket Bean | THBE | <i>Phaseolus polystachios</i> | 5 |
| | Pipolina Micro Clover | PMCL | <i>Trifolium repens</i> 'Pipolina' | 100 |
| | Virginia Mountainmint | VIMO-S | <i>Pycnanthemum virginianum</i> | 600 |
| | Kansas Wild Bergamot | KWBE-S | <i>Monarda fistulosa</i> var. <i>menthifolia</i> | 250 |
| | Paiute Devils Claw | PDCL | <i>Proboscidea parviflora</i> | 25 |
| | Tall Purple Coneflower | TPCO | <i>Echinacea purpurea</i> | 20 |
| | Tennessee Coneflower | TECO | <i>Echinacea tennesseensis</i> | 15 |
| | Golden Canna | GOCA | <i>Canna flaccida</i> | 15 |
| | California False Indigo | CFIN-S | <i>Amorpha californica</i> | (\$9.75) 1000/1oz |
| Greens | Broad Leaved Sorrel | BSLO-S | <i>Rumex acetosa</i> | 1100 |
| | Rugel's Plantain | RUPL-S | <i>Plantago rugelli</i> | 150 |
| | Cherry Vanilla Quinoa | CVQU | <i>Chenopodium quinoa</i> | 250 |
| | Giant Tree Spinach | GTSP | <i>Chenopodium giganteum</i> | 825 |
| | Scotch Broom 'Plan B' | SCBR-S | <i>Cytisus scoparius</i> 'Plan B Strain' | 200 |
| Strawberry | Red Wonder Strawberry | RWST-S | <i>Fragaria alpinus</i> | 200 |
| | Yellow Wonder Strawberry | YWST-S | <i>Fragaria alpinus</i> | 200 |
| Sunflower | Arikara Polyheaded Sunflower | APSU | <i>Helianthus annuus</i> | 40 |
| | Arikara Sunflower | ARSU | <i>Helianthus annuus</i> | 40 |
| | Cucumberleaf Sunflower | CUSU | <i>Helianthus debilis</i> ssp. <i>Cucumerifolius</i> | 100 |
| | Havasupai Sunflower | HASU | <i>Helianthus annuus</i> | 50 |
| | Hopi Black Sunflower | HBSU | <i>Helianthus annuus</i> | 50 |
| | Tarahumara White Sunflower | TWSU | <i>Helianthus annuus</i> | 40 |
| | Sunchoke | SUNC-S | <i>Helianthus tuberosus</i> | 10 |
| Tomatillo | Aunt Molly's Groundcherry | AMGR | <i>Physalis pruinosa</i> | 800 |
| | Fruta Verde Tomatillo | FVTO | <i>Physalis ixocarpa</i> | 140 |
| | Peruvian Gold Groundcherry | PGGR | <i>Physalis peruviana</i> | 150 |
| | Yellow Groundcherry (Perennial) | YEGR-S | <i>Physalis longifolia</i> subglabrata | 400 |
| Tomato | Kanaan Cherry Tomato | KCTO | <i>Solanum</i> | 100 |
| | Sibirski Skorospley Tomato | SSTO | <i>Solanum</i> | 150 |
| | Tegucigalpa Paste Tomato | TPTO | <i>Solanum</i> | 80 |
| | Volgogradski Tomato | VOTO | <i>Solanum</i> | 80 |
| | Wild Texas Cherry Tomato | WTCT | <i>Solanum</i> | 100 |
| Vines | Colorado Preserving Watermelon | CPWA | <i>Citrullus lanatus</i> | 20 |
| | Egusi Bigfruit Watermelon | EBWA | <i>Citrullus lanatus</i> var. <i>mucosopermus</i> | 20 |
| | Egusi Papershell Watermelon | EPWA | <i>Citrullus lanatus</i> var. <i>mucosopermus</i> | 5 |
| | Jack Scott Squash | JSSQ | <i>Cucurbita</i> | 20 |
| | Jelly Melon | JEME | <i>Cucumis metuliferus</i> | 25 |
| | Snap Melon | SNME | <i>Cucumis melo</i> var. <i>momordica</i> | 25 |
| | Sikkim Cucumber | SICU | <i>Cucumis sativus</i> | 25 |



Cherry Vanilla Quinoa



Kansas Wild Bergamot



Sunchokes and Giant Tree Spinach



California False Indigo



Tegucigalpa Paste Tomato



Scotch Broom 'Plan B'



Paiute Devil's Claw



Volgogradski Tomato



Wild Texas Cherry Tomato



Sibirski Skorospley Tomato



Glaskins Perpetual Rhubarb



Snap Melon



Tall Purple Coneflower



Sikkim Cucumber

Photos: Wild Goose Plum, Siberian Apricot Flowers, White Dwarf Sandchick Flowers, Tree Spinach Seedlings, Musk Strawberries, Michigan Lily, Cathay Quince Flowers, Oak at Sunrise, Dwarf Korean Chestnuts



OIKOS P.O. Box 19425 Kalamazoo, MI 49019-0425
TREE CROPS T: 269-624-6233 • F: 269-624-4019
www.oikostreecrops.com